



Rice vs. Santa Clara

RICE CAMPUS ★ SEPTEMBER 30

OFFICIAL PROGRAM 25c

I lead the crowd in "Rah Rah Rah"
To cheer the team we like;
But when it comes to cigarettes
I cheer for Lucky Strike!



I really am a Lucky guy.
Just got my Ph. D.
To prove to you how much I know,
L.S., sir means F.T.



Be Happy- Go Lucky!

Enjoy your cigarette! Enjoy truly fine tobacco that combines both perfect mildness and rich taste in one great cigarette - Lucky Strike!

Perfect mildness? You bet. Scientific tests, confirmed by three independent consulting laboratories, prove that Lucky Strike is milder than any other principal brand. Rich taste? Yes, the full, rich taste of truly fine tobacco.

Only fine tobacco gives you both real mildness and rich taste. And Lucky Strike means fine tobacco. So enjoy the happy blending that combines perfect mildness with a rich, true tobacco taste. Be Happy—Go Lucky!



Some claim this and some claim that,
But when all is said and done...
For full, rich taste and mildness, too,
Lucky Strike's the one!



L.S./M.F.T.-
Lucky Strike
Means Fine Tobacco

COPR., THE AMERICAN TOBACCO COMPANY

University of Santa Clara

SANTA CLARA, CALIFORNIA

vs.

Rice Institute

HOUSTON, TEXAS

Published by:

THE RICE INSTITUTE ATHLETIC ASSOCIATION

DON SUMAN, Program Manager

Official

FOOTBALL PROGRAM

Price 25c

SOUTH TEXAS NATIONAL BANK

Progressive Banking Service Since 1886

213 MAIN STREET • HOUSTON, TEXAS

MEMBER FEDERAL DEPOSIT INSURANCE CORPORATION



Satisfy Your Hunger at



6515 SOUTH MAIN
OPPOSITE RICE INSTITUTE

Bill Williams

GOOD FOOD TO FIT YOUR APPETITE AND YOUR POCKETBOOK

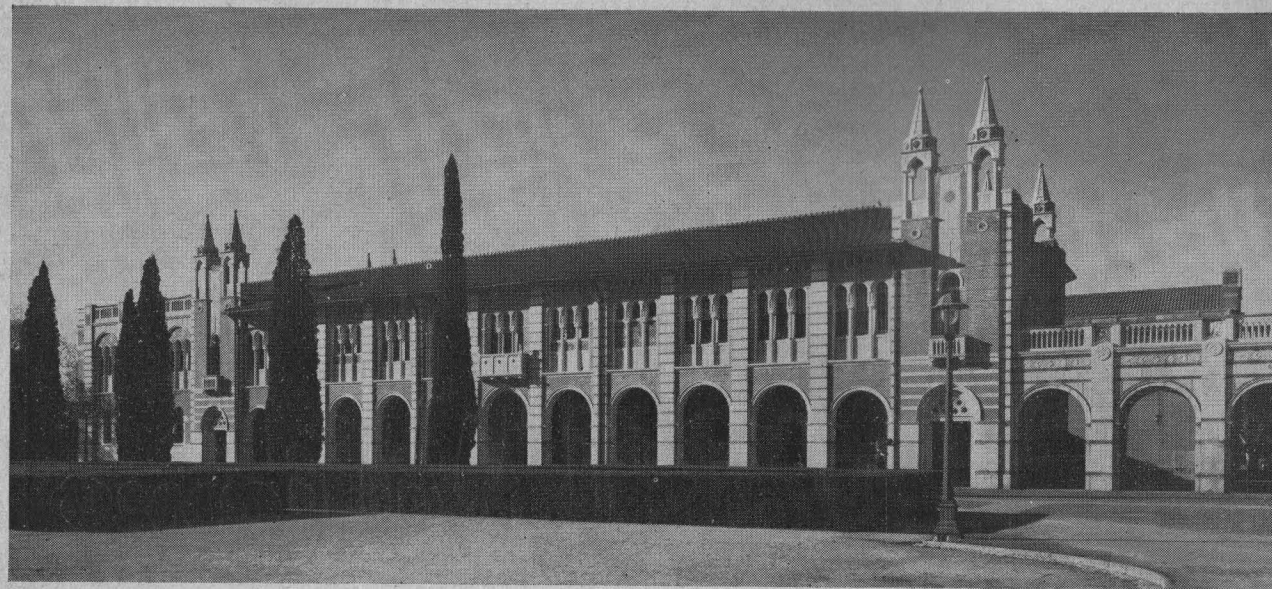
By BILL WHITMORE
Sports News Director, Rice Institute

Tonight's game is more than just another football game for the Rice Owls. This contest marks the beginning of a new era in athletics at Rice.

It is the debut of the great new stadium . . . it begins the athletic year in which Rice will have a fine new physical education building as well as the stadium . . . with this game Jess Neely becomes dean of all Rice head football coaches as he begins his eleventh year at the helm . . . Owl fans are afforded their first chance to see how the team measures up to other Southwest Conference clubs that opened last week . . . Santa Clara's appearance initiates a program of bringing major rivals from other sectors for top intersectional games here.

On this occasion, speaking in behalf of the members of the Athletic Department of The Rice Institute as athletic director and head football coach, Jess Neely has issued the following statement:

"We members of the Athletic Department wish to express our gratitude to the former athletes and friends of Rice who have made this wonderful stadium possible. I am certain the Rice team of this year and those in the future will acquit themselves in such a way as to bring credit to the stadium and to those who had the foresight to build it."



LOVETT HALL—Administration Building on Campus of The Rice Institute

A special word of praise also goes out from the Athletic Department to the members of the faculty on the Committee on Outdoor Athletics, headed by Dr. H. E. Bray, which group has played such an important role in the success of the Rice athletic program.

With the determination to make the stadium opening night a success in every way, the Owls will enter tonight's fray eager to score a victory over the Broncos from Santa Clara.

The Owls will run from the standard "T" formation. They will feature a veteran backfield with two-year letterman Vernon Glass running things from the man-under post, the flashy little speedsters—Sonny Wyatt and Billy Burkhalter—at halfbacks, and two year letterman George Glauser at fullback. These are the starters—the Owls have several other fine backs who are slated to see lots of action, particularly returning lettermen Emmanuel Braden and Rex Proctor.

With new starters at every position, the new Owl line remains a question mark. The young, but talented, front liners hope to prove themselves in battle tonight. Keep an eye on such lads as 250-pound tackle Paul Giroski, center Lee Stonestreet, guard Ike Neumann, and pass grabbing ends Sonny McCurry, Bill Howtown, and Frank Allen.

By MIKE WELDS
Sports News Director, Santa Clara University

Tonight's kickoff will pit two collegiate elevens that possess records unequalled in the nation's annals—both Rice and Santa Clara have swept three major bowl games without defeat.

Further, the Rice-Santa Clara game is the only contest in 1950 in which two undefeated major bowl winners meet during the regular season.

It is fitting, therefore, that tonight's game, which dedicates this magnificent new stadium, is receiving the nationwide attention that it is.

Rice, the Cotton Bowl champion, and Santa Clara, the Orange Bowl kings, are not strangers. Seventeen years ago the two colorful teams met in San Francisco's Kezar Stadium.

On that November day in 1933 the visiting Owls from Rice suffered a 13-0 setback at the hands of

the host Santa Clarans. Halfback Frank Sobrero tossed two pay-off aeriels to overshadow Rice's great passer, Harry Fouke.

An injury early in the game sidelined Fouke—otherwise the decision might have been reversed.

Although Santa Clara does well at post-season bowl games, the same cannot be said for the Broncos' last appearance in Texas.

Just two seasons ago the Santa Clarans travelled to Dallas to meet another Cotton Bowl champion—the Doak Walker-led SMU Mustangs.

Coach Matty Bell's boys gave the Broncos a thorough lesson in football, humiliating the visitors, 33-0.

Santa Clara wants to prove to the Lone Star State that the 1948 debacle was all a mistake. One way to conclusively do it is triumph over Rice tonight.

So, tonight's Bronco weapon may be similar to the one which brought victory over Rice, back in 1933.



SANTA CLARA ORANGE BOWL VETS—John Justice, Tackle; Ed Rotticci, Center; Bob Dominick, Tackle; John Pasco, Back; Jim Cozad, Tackle; Saxon Wraith, Back.

BOARD OF GOVERNORS OF THE RICE INSTITUTE
 ... TRUSTEES ...



GUS S. WORTHAM



GEORGE R. BROWN
 CHAIRMAN



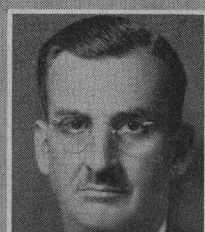
LAMAR FLEMING JR.



WILLIAM A. KIRKLAND



J. NEWTON RAYZOR



DR. FREDRICK R. LUMMIS

TERM MEMBERS

HERBERT ALLEN
 ROBERT P. DOHERTY

FRANCIS T. FENDLEY
 WALTER L. GOLDSTON
 JOHN S. IVY

ROBERT H. RAY
 HARMON WHITTINGTON

A Message from the Board of Trustees

The dream of the friends of Rice Institute and sports lovers all over the country has been fulfilled. At last Rice has a stadium which we believe to be the finest in the nation, and hereafter it will be a rare occasion when all who feel inclined can't come and see the Owls perform.

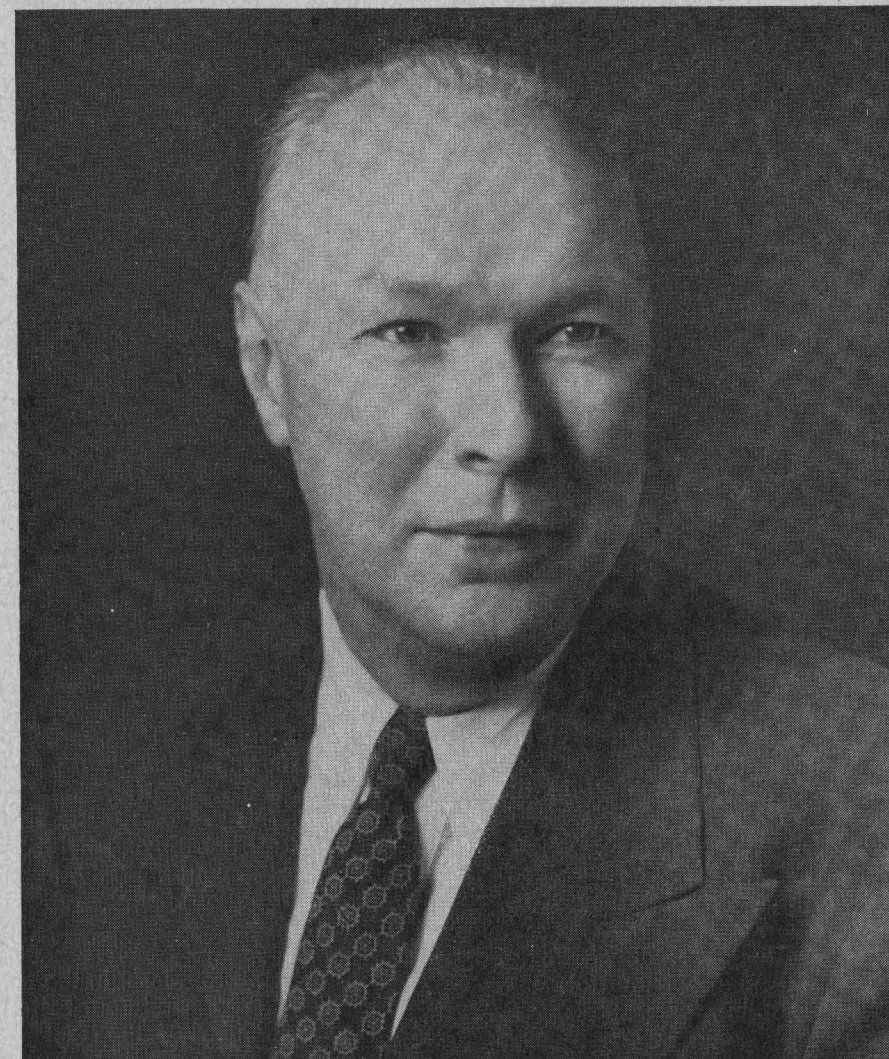
Heretofore thousands of people in Houston and surrounding territory were not able to get desirable seats, or any seats at all. Therefore although Rice might have the best team in the nation, only a handful of fans could see a game in Houston.

This magnificent new stadium has been the result of gratifying teamwork by all concerned. It has not been an easy task to plan, finance, and construct

such a project in so short a time. There were the option holders who so generously made the financing possible, the architects and engineers who spent many rush hours poring over plans, the contractors who undertook so forbidding a schedule with no expectation of profit, the suppliers who cut their prices to the bone, and lastly the fans whose ticket purchases provide the ultimate support for the team and stadium.

It is our hope that this stadium in years to come will be a joy and pleasure not only to Rice Institute and Houston, but to all Texas.

Board of Trustees
 The Rice Institute.



DR. WILLIAM V. HOUSTON
 President, The Rice Institute

The Rice Institute is honored to welcome its guests in this new stadium. We can all be proud of the finished structure but we are still more proud of the way in which it has been provided by so many citizens of Houston.

Some thirteen thousand seat options were purchased by those who gave the initial impetus to the Stadium. The general contracting firm and many of the suppliers of material donated their normal profits and overhead costs to permit the finest possible design. And very especially, the hundreds of men working on the construction put into it their full and enthusiastic efforts to complete a magnificent job in record time.

To all of those who gave of their time, their efforts, and their money I want to express Rice's thanks. To you, our guests, may I express the wish that the stadium may fulfill its purpose in your enjoyment, and in the achievements of Rice's teams.

DR. WILLIAM V. HOUSTON



THE NEW STADIUM

Football fans who attend the home games of The Rice Institute Owls are privileged to see major college football in the newest and finest stadium in the nation.

This beautiful structure, which can seat 70,000 fans, is not only the first of such size to be constructed in its entirety in the nation in many years, it is the most modern plant anywhere.

All of the finest features of major stadia elsewhere in the nation have been incorporated into this one, along with many new outstanding features.

This new stadium on the campus of The Rice Institute was constructed to provide proper facilities for fans of the great and growing Houston area to see major college football. Its presence is slated to make Houston the grid capital of the greater Southwest.

The new stadium at Rice has been built without profit by Brown & Root, Inc. of Houston. George R. Brown, chairman of the Board of Trustees of The Rice Institute, is executive vice-president of that firm.

Other prominent Houstonians or firms which figured in on the building of the new stadium include Lloyd & Morgan, and Milton McGinty, who were the architects...Lockwood & Andrews, civil and mechanical engineers...Walter P. Moore, structural engineer...Mancill Allen, sodding expert...C. J. Rollo, general superintendent of the project...and Frank Kuich, construction superintendent.

SPECIAL FEATURES OF NEW STADIUM

You, who are spectators at this fine new stadium, may look about and see for yourself the many outstanding features of this mammoth structure that was built in less than ten months.

Note that the stands slant at a concave angle, that is, they incline gradually from 25 to 35 degrees, rather than at a straight 30 degree angle as in the old stadium. This provides a greatly improved direct line of vision of the playing field. With the elimination of a track around the field, the stands are closer to the field of play to help more than ever in putting spectators right on top of the field action.

The opera-type fold-back seats in the boxes beyond a doubt are the finest in the nation for viewing a football game with relation to location and comfort. The remainder of the seats are of the best quality—they are made of planks of redwood, which do not splinter. Note that each seat is 18 inches wide and 12 inches deep, well above the average space per spectator as in most stadia.

The concourses on the lower and upper decks are of maximum width, 60 to 90 feet on the lower, and 20 to 60 feet on the upper, to provide for a maximum of traffic flow.

Such services as concession stands, rest rooms (22 in all), telephones, etc., have been strategically located on the concourses so that no one will have a long walk to reach such facilities.

The lighting system is one of the finest in the world. There are 24 lamps on each of the 16 towers. Light intensity is measured at 55 foot candles. These lights have a special control beam so they will not shine directly into the eyes of players or fans.

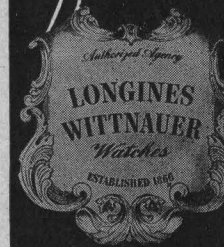
The huge press box atop the west stands is one of the largest and most modern anywhere. It serves a minimum of 300 working newsmen, broadcasters, and photographers. The triple deck press box is 240 feet in length, with the first deck the "radio level," the second deck is "press row," and the top deck is for photographers and newsreel cameramen.

OFFICIAL TIMING WATCH FOR THE RICE-SANTA CLARA FOOTBALL GAME

Longines

The World's Most Honored Watch

THE WORLD STANDARD OF ACCURACY FOR SPORTS TIMING . . . 10 WORLD'S FAIR GRAND PRIZES, 28 GOLD MEDALS . . . HIGHEST OBSERVATORY ACCURACY HONORS



Product of

Longines-Wittnauer Watch Company

SINCE 1866, WATCHES OF THE HIGHEST CHARACTER
LONGINES WATCHES from \$71.50; WITTAUER WATCHES from \$34.75



GO GET 'EM, OWLS!

The HOUSE of CARPETS

FLOOR COVERINGS

ALSO

CONTRACT DEPARTMENT

FOR COMMERCIAL USE

3703 SOUTH MAIN ST.

LI-2005

JA-9633

AT LUNCH OR DINNER

You can always enjoy a delicious meal in the Warwick's Famous Crystal Dining Room

A PLEASURE TO SERVE YOU



R. T. CULLATHER, Manager

WARWICK HOTEL

AND APARTMENTS

Houston 1, Texas

"The Official Watch for Timing this Game is Longines . . . The World's Most Honored Watch"



For the
**All-American
 Week-End**



Make The Shamrock your "home-team" hotel — where gracious hospitality and a warm welcome are yours, whoever your favorite in today's game.

It's well to "suit-up" at The Shamrock and enjoy the comfort, the faultless service, the superb cuisine, the luxurious facilities that only The Shamrock affords its guests.

Cavalcade of Stars

There's always exciting big-name entertainment in The Shamrock's famed Emerald Room . . . stars of stage, radio and motion pictures appear continually, in person, in the Cavalcade of Stars. You'll enjoy your "night out" in The Shamrock's supper clubs.

GLENN McCARTHY, *President*

M. JACK FERRELL, *Exec. Manager*

The Rice Athletic Association Would Appreciate You Patronizing Our Advertisers

TEXAS' OLDEST DODGE & PLYMOUTH DISTRIBUTOR



COME IN . . .
 drive the new Dodge yourself
 at **JACKSON MOTORS**

- Rugged Beauty
- Famous Dodge Dependability
- Solid Comfort

Always Keep Your Car in Top Shape with
 Jackson's Expert Repair Service

JACKSON MOTORS
 2404 Main Street
 Houston

THE RICE INSTITUTE ATHLETIC COACHING STAFF



JOE DAVIS
LINE COACH



CECIL GRIGG
BACKFIELD COACH



A.M. BALE
END COACH



CHARLES MOORE
FRESHMAN COACH



EMMETT BRUNSON
TRACK COACH
BUS. MGR. OF ATHLETICS



JESS NEELY
ATHLETIC DIRECTOR
HEAD FOOTBALL COACH



DON SUMAN
BASKETBALL COACH



HAROLD STOCKBRIDGE
BASEBALL COACH
ASS'T FOOTBALL COACH



JACK MCBRIDE
ASS'T FOOTBALL COACH



EDDIE WOJECKI
HEAD TRAINER



CARROLL MARTIN
OFFICE MGR.



BILL WHITMORE
SPORTS NEWS DIRECTOR

TOUCHDOWN OWLS!



For your favorite sports on TV... See



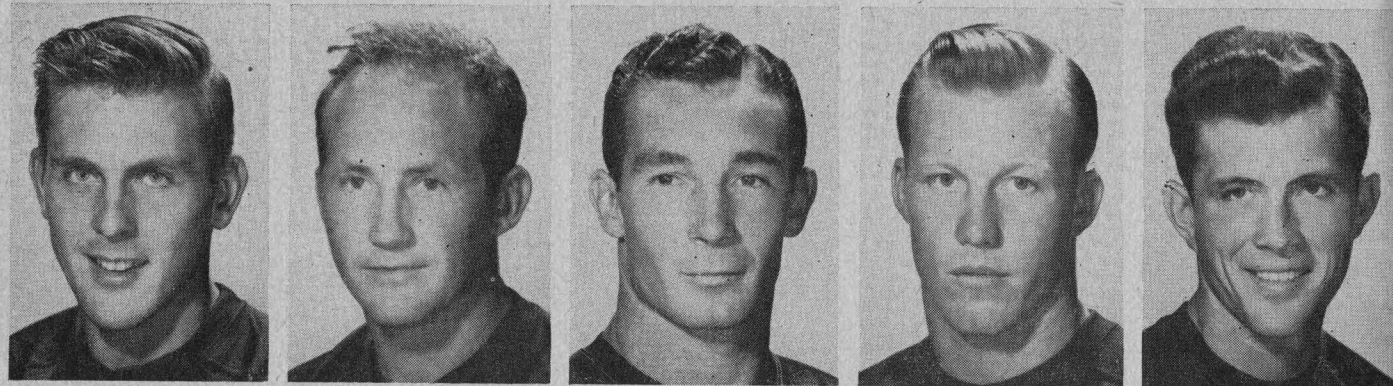
BLACK-DAYLITE TELEVISION

All year round, your favorite sport is at your fingertips, clearly and sharply, with a new G-E Black Daylite Television receiver. Thrill to the big-as-life, close-up, steady picture in a beautiful cabinet. You'll be delighted with any of the smart up-to-date models your G-E dealer is now showing. Ask for a home demonstration. Before you buy TV see G-E.

MONTGOMERY-WARD, Inc.

901 CAPITOL AVENUE

HOUSTON, TEXAS



10—Sammy Burk 44—Sonny Wyatt 20—Donald Campbell 15—Dickie Bob Haddox 45—Rex Proctor

SAMMY BURK, Back—Soph, 170, 5'11". This youngster from Luling played so well in fall drills he quickly moved up to battle for a starting job as a defensive halfback . . . very aggressive.

SONNY WYATT, Back—Senior, 172, 5'8". Smallest (in stature) but one of best backs on squad . . . very fast starter, seldom loses ground . . . was team's leading ground gainer, third in conference behind Rote and Mazzanti last fall . . . had a net gain of 704 yards, lost only 11 in 137 carries . . . will do much of the punting . . . only full season '49 regular returning . . . was one of most under-rated backs in Southwest last fall, should be in spotlight in his wind-up as Senior.

DON CAMPBELL, Back—Senior, 168, 5'10". All-stater from Port Arthur has been in background because of host of experienced backs two previous years . . . may come through this fall.

DICKIE BOB HADDOX, Back—Soph, 160, 5'9". Smallish, but talented, this will be his "year to learn" as soph.

REX PROCTOR, Back—Senior, 173, 5'10". Ranked fourth in conference in punt returns in '49 with 13.8 yard average in 19 returns . . . valuable safetyman . . . from the quaintly named town of Sour Lake . . . an all-around athlete, he plays baseball and basketball, too.

Our Congratulations to Rice Institute
on their New Stadium, and to Brown
& Root, Contractors for an Outstand-
ing Job Performed in Record Time.

FARNSWORTH & CHAMBERS Co., Inc.

CONTRACTORS **F&C** ENGINEERS

ATwood 2451 • BOX 74 • 3018 LEELAND

HOUSTON 1, TEXAS

The Rice Athletic Association Would Appreciate You Patronizing Our Advertisers

3 RISING STARS *going places—fast!*

HOUSTON Stadium

Phillips 66 POWER PACKED Gasoline & Oils

ADA OIL COMPANY
Your Friendly SERVICE STATIONS

Just as your new HOUSTON STADIUM adds to your football pleasure this season—so, too, your new **improved PHILLIPS 66** gasoline adds to your motoring pleasure this year.

Higher anti-knock, **power-packed** for greater mileage and lower cost, PHILLIPS 66 is the gasoline for **your** car, for **your** budget.

The odds are 3 to 1 you'll find the car with that extra-smooth, **gliding** start . . . with that fast, **effortless** get-away—using PHILLIPS 66 gasoline and lubricants!

In motoring, as in football . . . it's **performance** that counts. That's why each week, more and more thousands of Texas motorists improve their score with PHILLIPS 66.

Today, tomorrow—**always**—drive into one of the more than 300 Phillips 66 Service Stations serviced by ADA OIL COMPANY. You'll like their friendly, fast, and thorough service. You'll marvel at the greater mileage and lower operating costs their products give you.

FOR GOING PLACES *fast* . . .

ADA **OIL COMPANY**
DISTRIBUTORS IN THE TEXAS GULF COAST AREA
POWER PACKED
Petroleum Products

PHONE Woodcrest 9666 609 HUGHES STREET HOUSTON, TEXAS



25—Harmon Carswell 35—Bill Frazier 36—Billy Ed Daniels 26—Dan Drake 16—Vernon Glass

HARMON CARSWELL, Back—Senior, 167, 5'11". May be ready for good year...injuries so far have kept this former all-state back from Lufkin under cover. Can pass with best of them.

BILL FRAZIER, Back—Soph, 175, 5'10". Small, but smart, he's a fine field general...makes good grades...good passer...from nearby Pasadena. Can play fullback, too.

BILLY ED DANIELS, Back—Soph, 175, 6'. Lacks only experience to be a top notch halfback...noted for speed in high school at Kerrville in "hill country."

DAN DRAKE, Back—Soph, 175, 6'1". This Ft. Worth youngster showed up well with frosh. Needs experience, but developing fast.

VERNON GLASS, Back—Senior, 170, 5'11". A key man in Rice grid picture...has lettered twice, but never been full-fledged regular as played behind Tobin Rote...well-groomed for the role, should make team "go" as leader and play-caller. Excellent passer, adept ball handler.

It's **REALLY DRY-**



You've Been Waiting For
a really DRY, really LIGHT, beer
like today's sensational Premium
Quality Southern Select. It's
everything you've always wanted
in a beer! Discover it yourself.

It's
Southern
Select

**FOR ALL-
EVENING
FUN!**



Galveston-Houston Breweries, Inc.
Galveston, Texas

ON BEHALF OF THE EMPLOYEES,
MANAGEMENT AND OWNERS OF
W. D. HADEN CO.....

Congratulations TO RICE INSTITUTE

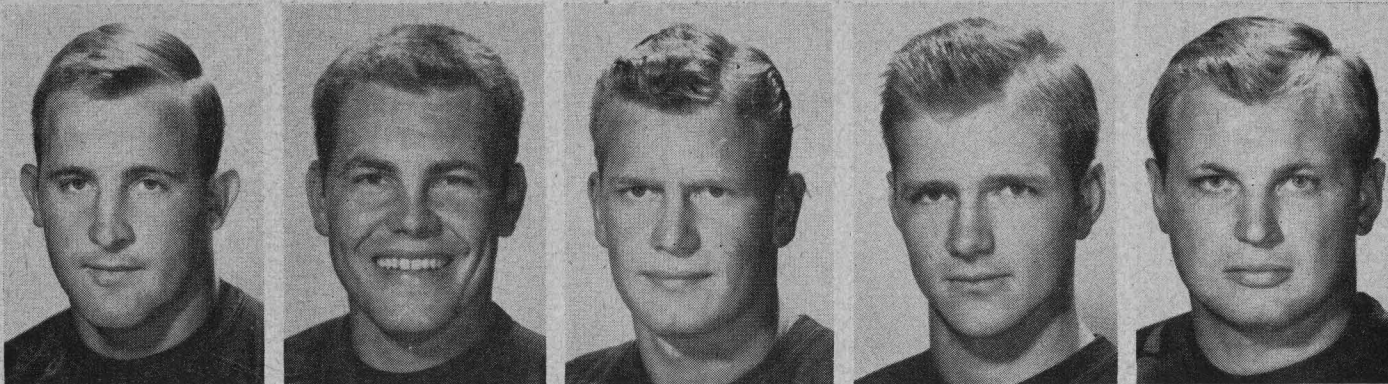
*for the vision and foresight
in bringing to Houston the
magnificent facilities of
this splendid new stadium*

W. D. HADEN CO.

Suppliers of all Concrete for Rice Stadium

GALVESTON HOUSTON PORT ARTHUR BEAUMONT

The Rice Athletic Association Would Appreciate You Patronizing Our Advertisers



65—Ed McLeaish 61—Eugene Little 67—Charles Stearnes 64—Don Mullenix 62—Ike Neumann

ED McLEAISH, Guard—Junior, 195, 6'. A "holdout" last fall, has three more years eligibility...likely will play a lot on defense.

GENE LITTLE, Guard—Soph, 210, 6'1". Comes from a "football family" in Corpus Christi...only soph likely to be a starter... will help a lot if he matches spring performance in the fall...rough and ready.

CHARLES STEARNS, Guard—Junior, 202, 6'. Fits same category as McLeaish, although he played a little and has only two years eligibility...moves well for a big man.

DON MULLENIX, Guard—Junior, 201, 6'1". Sat out the '49 season as far as playing in games was concerned, so had three years eligibility beginning with '50. Learned a lot scrimmaging against strong varsity...played well in spring training...can be valuable man at "short" position if he comes through.

IKE NEUMANN, Guard—Senior, 197, 5'11". A converted fullback, the Port Arthur lad has found his niche...showed up very well as guard and linebacker on defense in late season games... had a good day in Cotton Bowl game...may be an "iron man" as he's a fine blocker as well as defensive performer.

DOWNTOWN CHEVROLET CO.
OF HOUSTON



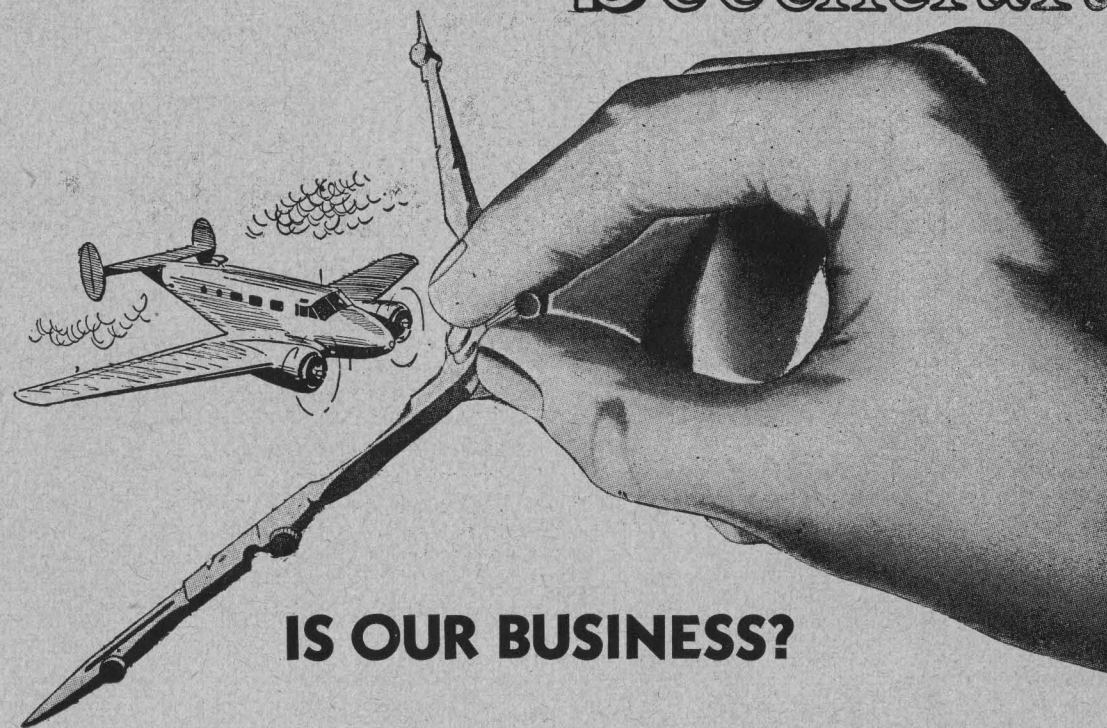
Sales and Service

McKinney at Austin

PReston 1204

The Rice Athletic Association Would Appreciate You Patronizing Our Advertisers

THE *Life Span* OF YOUR **Beechcraft**



IS OUR BUSINESS?

In keeping with the progress of advanced Beechcraft design, the J. D. Reed Company has developed an engineering and economic approach resulting in important new maintenance standards that have substantially reduced costs for customers and lengthened the life span of their aircraft.

The maintenance procedure in our shop is a miracle of speed and efficiency with new methods, new tools and new techniques—all perfected by the J. D. Reed Company engineering staff.

We urge you to avail yourself of the superior facilities offered by the J. D. Reed Company—a company backed by 20 years of know-how derived from experience, engineering and research.

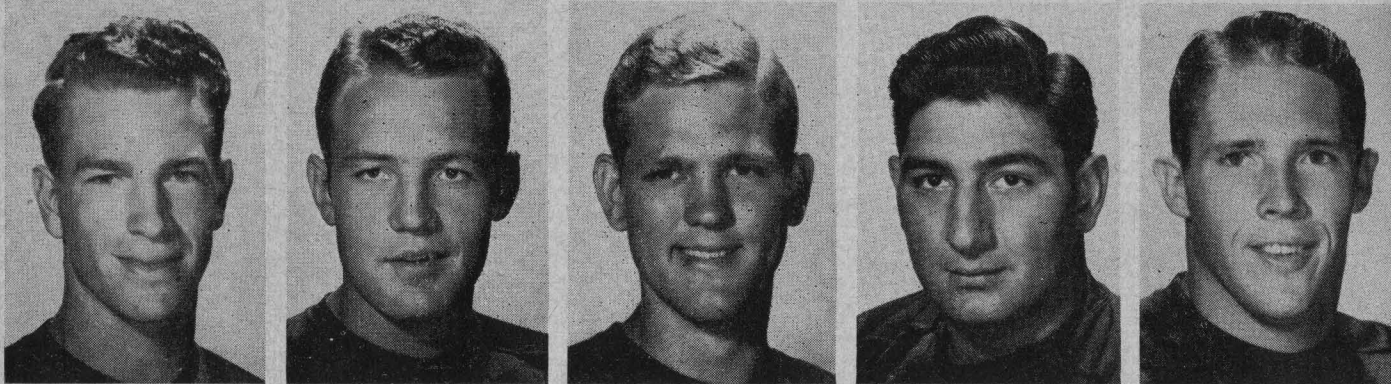


Better performance, less maintenance, lower operating costs—the specifications of any J. D. Reed Company work order.

Phone: OLive 4351



SALES ★ SERVICE



70—Charles Bittner

79—Buddy Edwards

75—Ted Watson

69—Fred Curry

78—Jack Davis

CHARLES BITTNER, Tackle—Junior, 200, 6'2". Another of the several sophs of '49 holdouts...this Corsicana boy can be of some help.

BUDDY EDWARDS, Tackle—Soph, 225, 6'2". Only out-of-stater on squad, and he lives less than mile from Texas on Arkansas side of Texarkana...question mark performer because of knee injury...off-season operation apparent success, but time will tell...friendly, talkative young man.

TED WATSON, Tackle—Junior, 202, 6'3". Still another of line-men holdouts of '49 sophs... one of biggest boys on squad in height...played high school ball at Corpus Christi, but parents recently moved to Fort Worth.

FRED CURRY, Guard—Soph, 225, 6'. Biggest of the guards, the Houston boy may see lots of action.

JACK DAVIS, Tackle—Soph, 215, 6'1". A big fellow from East Texas, Palestine...is slated to see a lot of service this fall... showed much promise in spring drills.

LEADERS!

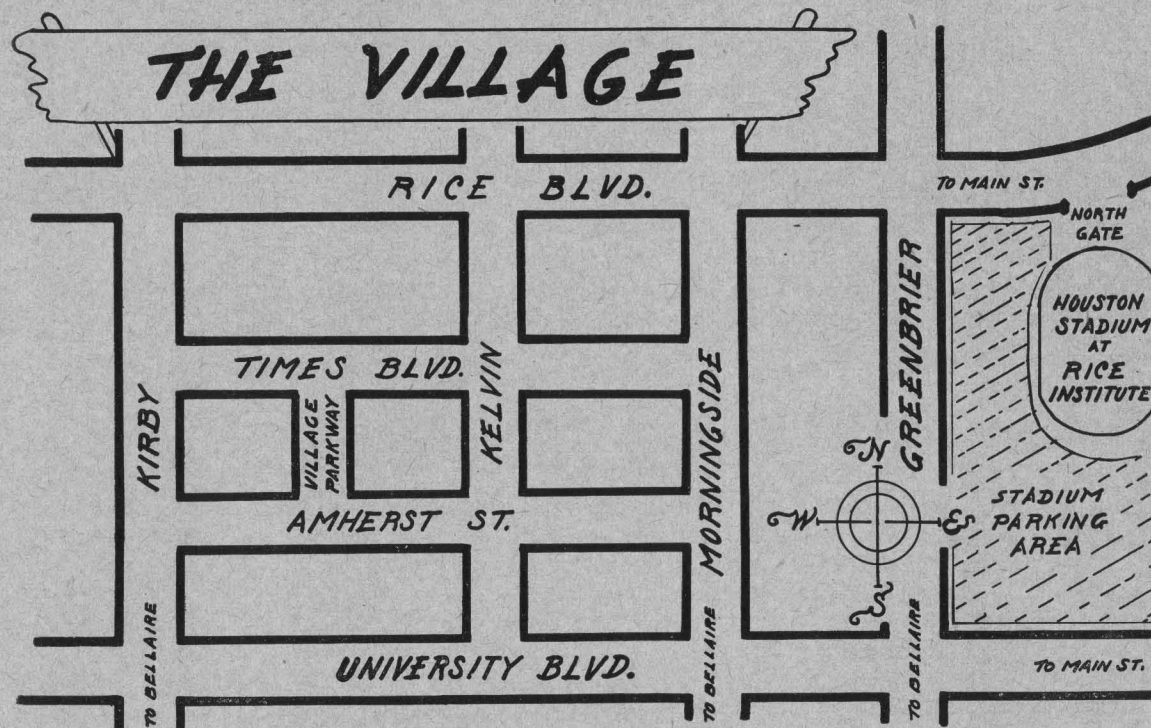
Humble Esso Extra Gasoline was first in the field of post-war gasolines for post-war automobiles... is still the leader... with extra anti-knock performance, extra power, extra quick starting and pick-up... plus a patented solvent oil to keep engines extra clean. Many automobile dealers recommend Esso Extra gasoline to new car owners; drivers of any make and model will find Esso Extra's extra performance something extra for their money.

Humble Esso Extra Motor Oil is the best you can buy. That is a statement of fact based on road tests and laboratory analysis. It is the only motor oil that combines extra cleaning quality, extra wetting ability, extra acid and sludge resistant characteristics with highest viscosity index. Users recommend Humble Esso Extra Motor Oil.

- Stop at any Humble sign for extra service
- ... to fill up with Esso Extra gasoline
- ... to change to Esso Extra Motor Oil.



HUMBLE OIL & REFINING COMPANY



YOU CAN FIND IT IN THE VILLAGE

It is the answer to the ever increasing demand for an un-congested business district with plenty of parking space.

Over 200 stores to fill your every need.

Sponsored by the Village Association — an Association of Merchants and Businessmen formed to give to the surrounding community the finest shopping center in the South.

- | | |
|-------------------------------------|-----------------------------------|
| 2 Auto Supply & Appliance Stores | 2 Insurance Agencies |
| 2 Auto Repair Shops | 3 Interior Designers & Upholstery |
| 1 Bakery | 4 Jewelers |
| 1 Bank | 1 Kitchen Designer |
| 7 Beauty and Barber Shops | 12 Ladies Ready to Wear |
| 1 Bicycle Shop | 1 House of Lamps |
| 2 Book Stores | 5 Laundries |
| 2 Camera Shops | 3 Liquor Stores |
| 1 Candy Store | 3 Lounges |
| 8 Cafes | 3 Meat Markets |
| 2 Children's Wear | 3 Men & Boys Shops |
| 4 Cleaners | 2 Newspapers |
| 2 Dancing Studios | 3 Paint & Wallpaper Stores |
| 3 Developers & Leasers | 1 Post Office |
| 2 Dentists | 1 Picture Framing Store |
| 2 Department Stores | 6 Physicians & Surgeons |
| 4 Drug Stores | 4 Radio & Television |
| 3 Drive in Grocers | 4 Real Estate Agencies |
| 2 Engineers | 1 Roofing Contractor |
| 2 Florists | 1 Seed Store |
| 1 Fabric Center | 1 Sewing Machine Center |
| 2 Food Lockers | 4 Service Stations |
| 4 Furniture Stores | 3 Shoe Repairs |
| 4 Gift Shops | 4 Shoe Stores |
| 4 Grocery Stores | 1 Specialty Shop |
| 1 American Legion Hall | 2 Sporting Goods |
| 2 Heating & Home Improvement Stores | 1 Slenderizing System |
| 1 Houseware Store | 1 Theatre |
| 3 Home Appliance Stores | 2 Variety Stores |
| 1 Ice Cream Store | 2 Weavers |

1 OFF-SIDE

2 ILLEGAL POSITION or PROCEDURE

3 ILLEGAL MOTION or SHIFT

4 DELAY of GAME

5 PERSONAL FOUL

6 ROUGHNESS and PILING ON

7 CLIPPING

8 ROUGHING KICKER

9 UNSPORTSMANLIKE CONDUCT

10 HOLDING by DEFENSE

11 ILLEGAL USE of HANDS and ARMS

12 INTENTIONAL GROUNDING

13 ILLEGALLY PASSING or HANDING BALL FORWARD

14 FORWARD PASS or KICK CATCHING INTERFERENCE

15 INELIGIBLE RECEIVER DOWN FIELD on PASS

16 BALL ILLEGALLY TOUCHED, KICKED or BATTED

17 INCOMPLETE FORWARD PASS; PENALTY DECLINED; NO PLAY or NO SCORE

18 CRAWLING; HELPING the RUNNER or INTERLOCKED INTERFERENCE

19 TOUCHDOWN or FIELD GOAL

20 SAFETY

21 TIME-OUT

WE DARE THEM ALL!
PHILIP MORRIS challenges any other leading brand to suggest this test!

HUNDREDS OF THOUSANDS OF SMOKERS, who tried this test, report in signed statements that PHILIP MORRIS is DEFINITELY LESS IRRITATING, DEFINITELY MILDER!

1 ... Light up a PHILIP MORRIS. Just take a puff—DON'T INHALE—and s-l-o-w-l-y let the smoke come through your nose. Easy, isn't it? And NOW ...

2 ... Light up your present brand. Do exactly the same thing—DON'T INHALE. Notice that bite, that sting? Quite a difference from PHILIP MORRIS!

Try this simple test. We believe that you, too, will agree...
PHILIP MORRIS is indeed, America's **FINEST** Cigarette!

NO CIGARETTE HANGOVER
 means MORE SMOKING PLEASURE!

CALL FOR **PHILIP MORRIS**



RICE (OFFENSIVE)

BY POSITIONS

<u>LE</u> F. Allen 89 Howton 84	<u>LT</u> Walls 73 Winship 77	<u>LG</u> Little 61 Verrett 60	<u>C</u> Stonestreet 55 Day 50	<u>RG</u> Neumann 62 Stearns 67	<u>RT</u> Giroski 74 Watson 75	<u>RE</u> McCurry 80 Boughton 85
<u>QB</u>						
Glass 16 Drake 26						
<u>LH</u>			<u>RH</u>			
Wyatt 44 Proctor 45			Burkhalter 12 Campbell 20			
<u>FB</u>						
Glauser 42 Braden 23						

SANTA CLARA (DEFENSIVE)

BY POSITIONS

<u>LE</u> Williams 80 Nagler 82	<u>LT</u> Dominick 79 Pisenti 77	<u>LG</u> Ramona 67 Brown 63	<u>C</u> Rotticci 52 Azevedo 51	<u>RG</u> Justice 65 Lang 61	<u>RT</u> Cozad 71 Cunningham 70	<u>RE</u> Wiborn 86 Gregory 84
<u>QB</u>						
Dung 43 Louis 23						
<u>LH</u>			<u>RH</u>			
Vogel 44 McMahon 42			Hare 10 Rasmussen 12			
<u>FB</u>						
Wraith 35 McCargar 32						

OFFICIALS

Referee: C. W. "Napper" Davis (Southwestern)
 Umpire: Peter Kramer (Washington State)
 Head Linesman: Lon Evans (T. C. U.)
 Field Judge: Frank Malette (U. S. C.)

See line-ups on page 24 for Santa Clara offense and Rice defense

SANTA CLARA SQUAD

10—Fran Hare	H	20	5'9"	160
11—Marte Formico	H	21	5'11"	140
12—Del Rasmussen	H	19	6'	160
14—Melvin Lewis	H	19	5'7"	165
15—Ben Moran	H	21	5'11"	170
21—John Pasco	Q	19	5'11"	180
23—Duane Louis	Q	18	6'	183
28—Len Napolitano	Q	20	5'10"	167
31—Hank Burget	F	20	5'11"	175
32—Joe McCargar	F	19	5'7"	175
33—Frank Clark	F	22	5'9"	180
34—Dick Cashman	F	25	6'2"	200
35—Saxon Wraith	F	21	5'9"	185
40—Jack Kaplan	H	20	5'7"	160
41—John Daly	H	19	5'11"	178
42—John McMahon	H	19	5'11"	180
43—Abraham Dung	Q-H	22	5'10"	175
44—Bernard Vogel	H	21	6'	185
51—Larry Azevedo	C	17	6'	190
52—Ed Rotticci	C	19	6'1"	209
55—Marvin Ferreira	C	19	6'2"	205
61—Louis Lang	G	20	6'2"	195
62—Pat Malley	G	19	5'11"	185
63—Ben Brown	G	21	5'9"	192
64—Don Bordenave	G	19	5'8"	203
65—John Justice	G	21	6'3"	219
66—Ken Lindegren	G	19	6'1"	202
67—Joe Ramona	G	19	6'1"	198
70—Basil Cunningham	T	21	6'2"	198
71—Jim Cozad	T	25	6'2"	215
72—Robert Gleeson	T	19	6'	215
73—John Flynn	T	19	6'2"	205
74—William Risko	T	23	6'4"	219
76—Edo Biasatti	T	18	5'11"	201
77—Eugene Pisenti	T	22	6'	208
79—Bob Dominick	T	21	6'2"	195
80—Larry Williams	E	19	6'2"	187
81—William Payne	E	19	6'2"	194
82—Gern Nagler	E	18	6'2"	180
83—Andy Honzel	E	19	6'	194
84—Marvin Gregory	E	19	6'2"	191
85—Ken Nardinelli	E	19	6'1"	200
86—Richard Wiborn	E	20	6'	178
87—Bruno Vial	E	20	5'11"	190
88—Eugene Lynch	E	18	6'1"	200
89—John Wash	E	18	6'2"	180
—Dan Scolari	Q	20	5'11"	180
—Vic Frediani	C	19	5'11"	201

THE LARGEST SELLING CIGARETTE IN AMERICA'S COLLEGES

BY LATEST NATIONAL SURVEY



RICE SQUAD

10—Sammy Burk	B	18	5'11"	175
11—Bobby Allen	E	19	6'2"	170
12—Billy Burkhalter	B	20	5'10"	175
14—Elywn Stobaugh	B	19	5'11"	160
15—Dickie Bob Haddox	B	18	5'9"	165
16—Vernon Glass	B	21	5'11"	170
19—Donald Dean	E	19	5'11"	185
20—Donald Campbell	B	23	5'10"	168
21—Tom McMillan	B	18	5'10"	170
22—Gene Silver	B	21	5'10"	160
23—Emmanuel Braden	B	23	6'	180
25—Harmon Carswell	B	23	5'11"	167
26—Dan Drake	B	19	6'2"	190
31—Teddy Riggs	B	21	5'10"	172
35—Bill Frazier	B	19	5'10"	162
36—Billy Ed Daniels	B	19	6'	175
40—Jerome Bindseil	B	19	5'11"	184
42—George Glauser	B	21	6'2"	195
44—Sonny Wyatt	B	22	5'8"	172
45—Rex Proctor	B	21	5'10"	173
49—Doyle Weldon	B	22	6'	210
50—Jack Day	C	20	6'	200
54—Don Rhoden	C	18	5'11"	195
55—Lee Stonestreet	C	21	6'	205
56—Weldon Wersterfer	C	19	6'	196
60—Simon Verrett	G	21	5'9"	200
61—Gene Little	G	21	6'	210
62—Ike Neumann	G	23	5'11"	197
63—George Sartor	G	19	5'11"	181
64—Don Mullenix	G	20	6'1"	195
65—Ed McLeaish	G	21	6'1"	207
66—Hans Wagner	G	19	6'1"	192
67—Charles Stearns	G	20	6'	202
68—John Boswell	T	19	6'1"	205
69—Fred Curry	G	19	6'	225
70—Charles Bittner	T	20	6'2"	190
71—Bill Crockett	T	18	6'2"	203
72—Lynn Preston	T	20	6'1"	215
73—Glenn Walls	T	21	6'3"	210
74—Paul Gioski	T	24	6'5"	250
75—Ted Watson	T	20	6'4"	210
76—Bobby Moore	T	20	6'2"	200
77—Bob Winship	T	20	6'2"	235
78—Jack Davis	T	19	6'1"	205
79—Buddy Edwards	T	19	6'3"	230
80—Sonny McCurry	E	20	6'4"	192
81—George Pontikes	E	19	6'1"	198
82—George Wright	E	20	6'1"	182
83—A. J. Loth	T	19	6'1"	220
84—Bill Howton	E	20	6'2"	177
85—Al Boughton	E	22	6'5"	200
86—Billy Wright	E	22	6'1"	210
87—Hardy Dean	E	21	6'1"	180
88—Billy Fisk	E	19	6'2"	177
89—Frank Allen	E	23	6'1"	182

Always **B**uy **MUCH MILDER** **C**CHESTERFIELD

Have a Coke

DRINK

Coca-Cola

TRADE-MARK ©

SANTA CLARA (OFFENSIVE)

BY POSITIONS

<u>LE</u>	<u>LT</u>	<u>LG</u>	<u>C</u>	<u>RG</u>	<u>RT</u>	<u>RE</u>
Williams 80	Dominick 79	Ramona 67	Rotticci 52	Justice 65	Cozad 71	Wiborn 86
Nagler 82	Pisenti 77	Brown 63	Ferreira 55	Malley 62	Cunningham 70	Gregory 84

QB

Pasco
21
Napolitano
28

LH

Vogel
44
Kaplan
40

RH

Hare
10
Rasmussen
12

FB

Wraith
35
McCargar
32

RICE (DEFENSIVE)

BY POSITIONS

<u>LE</u>	<u>LT</u>	<u>LG</u>	<u>C</u>	<u>RG</u>	<u>RT</u>	<u>RE</u>
F. Allen 89	Winship 77	McLeaish 65	Day 50	Stearns 67	Giroski 74	McCurry 80
Howton 84	Crockett 71	Curry 69	Neumann 62	Mullenix 64	Davis 78	Boughton 85

QB

Proctor
45
Wyatt
44

LH

Braden
23
Riggs
31

RH

Silver
22
Burk
10

FB

Stonestreet
55
Crockett
71

OFFICIALS

Referee: C. W. "Napper" Davis (Southwestern)
 Umpire: Peter Kramer (Washington State)
 Head Linesman: Lon Evans (T. C. U.)
 Field Judge: Frank Malette (U. S. C.)

See line-ups on page 21 for Santa Clara defense and Rice offense

HOUSTON COCA COLA BOTTLING COMPANY ★ 2800 BISSONNET

COMPLIMENTS OF

WHITAKER ELECTRIC CO.

Electrical Contractors
for Rice Field House

900 Pacific, Houston 6, Texas

LY-1661

JU-4643

GRANT E. WHITAKER, Owner



KARR CONSTRUCTION
AMERICA'S FINEST BEDDING ENSEMBLE

NOW comes PARKER'S

Lastic Foam

RUBBER MATTRESS
AND

PARKER'S

Custom Quality 10' Box Spring

PARKER
BEDDING COMPANY
OF HOUSTON

FREDERICK PARKER

JOEL PARKER

UNIVERSAL
PACKING & GASKET CO.

Houston Owned
and Operated



Home of Universal, where packings and gaskets are manufactured
for every industrial need.

The Rice Athletic Association Would Appreciate You Patronizing Our Advertisers



42—George Glauser 31—Teddy Riggs 23—Emmanuel Braden 12—Billy Burkhalter 22—Gene Silver

GEORGE GLAUSER, Back—Senior, 195, 6'2". Made a fine showing in spring training...can be a surprise...runs with knees high...has long stride...can run wide as well as up the middle...as rough a man as there is on squad...like Glass, has only one year to be a regular, but should make most of it as successor to Bobby Lantrip.

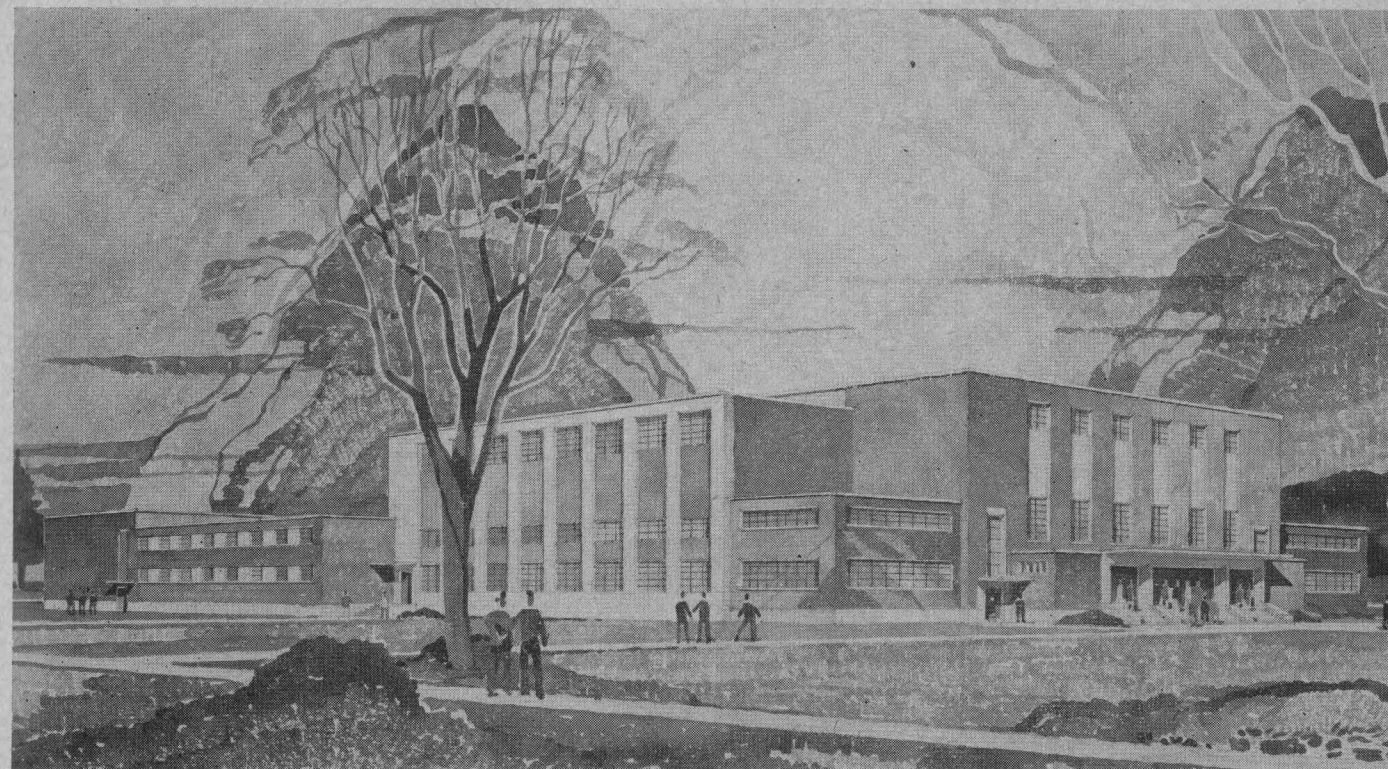
TEDDY RIGGS, Back—Junior, 172, 5'10". One of fastest of the backs, was standout as frosh in '48...should see more action this fall...nicknamed "Speed"—both for own ability and after the famous tobacco auctioneer.

EMMANUEL BRADEN, Back—Junior, 180, 6'. Returns after '49 ineligibility...will be valuable utility man...can play both right half and fullback, safety or halfback on defense...has speed,

quick start...hails from Eagle Lake, which produced Rice All-American back Bill Wallace of early thirties.

BILLY BURKHALTER, Back—Junior, 175, 5'10". Can be "the man" this fall...made the team in '49 with fine performance in Texas game subbing for injured senior Van Ballard...went on to be rated best back in Cotton Bowl game over the vaunted Charley Justice. Like running mate, Wyatt, relies on quick start on "T" for success, seldom loses yardage...second team All-Conference in '49...was all-state at Texarkana...smallish, clean-cut features, does not resemble top gridder until he starts running...good pass receiver.

GENE SILVER, Back—Junior, 170, 5'10". Was Riggs' running mate on '48 frosh...fast starter...all-around athlete, he's member of Rice golf team, one of state's top softball pitchers.



THE NEW PHYSICAL EDUCATION BUILDING

In addition to the new stadium, another fine athletic structure is being added to the campus scene at The Rice Institute this year. Just a few hundred yards from the southeast corner of the stadium is located the beautiful new Physical Education Building, now in the final stages of construction.

Here, beginning this winter, Rice Institute will play host to some of the nation's outstanding basketball teams on the Autry Court. Over 6,000 spectators can be accommodated for cage games.

The first game in the new gym will be against the Tulane University Green Wave on the night of December 9th. The Owl cagers also have home games with Northwestern University (Dec. 20), the Columbia University Lions of New York (Dec. 22), and Georgia Tech (Jan. 2) in addition to several other non-

conference contests and the annual clashes with Southwest Conference foes S. M. U., Texas, T. C. U., Baylor, Texas A. & M., and Arkansas.

The basketball court will have such features as a four-sided electrical scoreboard, glass backboards, and a 124 foot press box suspended from the roof above the court.

The new physical education building will have a special large trophy case in the spacious main lobby.

The building will serve as headquarters for all officials of the athletic and physical training departments.

The new gymnasium will have a large indoor swimming pool, handball courts, squash courts, boxing, wrestling, tumbling rooms and a target range.

There will be a wing for women's physical training facilities.

We are Proud . . .

Of our many young depositors who are starting now to acquire the independence of a savings account—the satisfaction of planned financing.

For over 30 years it has been our policy to extend to our customers a friendly understanding of their financial responsibilities. We invite you to drop by 712 Main to talk with us about our Free Services, Savings Plans, Loan Plans, Trust Facilities and Normal Charge Services.

Member Federal Deposit Insurance Corporation

National Bank of Commerce
OF HOUSTON
"The Bank of Courtesy"



D. B. McDANIEL CADILLAC
COMPANY

1320 MILAM STREET

HOUSTON, TEXAS

AFTER THE GAME . . .

Bar and Dining Room
Open Till Midnight

Madeline's Restaurant

4218 MONTROSE

JA 1944



220 MAIN STREET

"THE BANK OF CORDIALITY"

Member Federal Deposit Insurance Corporation



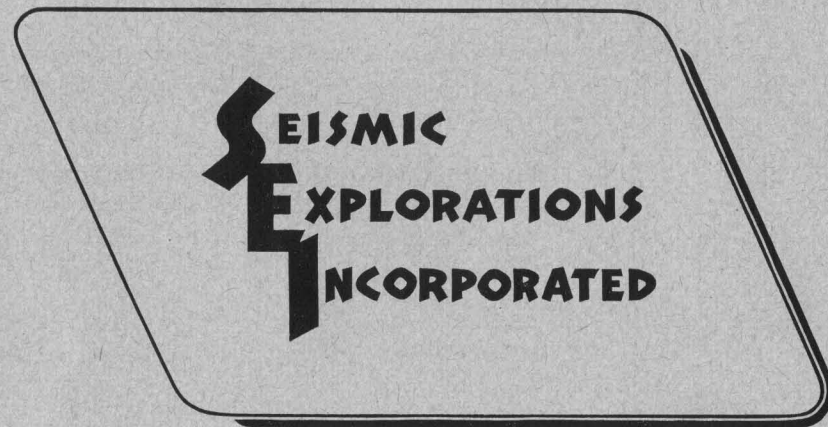
EXTRA GOOD
DAIRY PRODUCTS
MILK-ICE CREAM
JU-4163

Sanitary
FARM DAIRIES

It takes good teamwork to build buildings
and to play championship football.

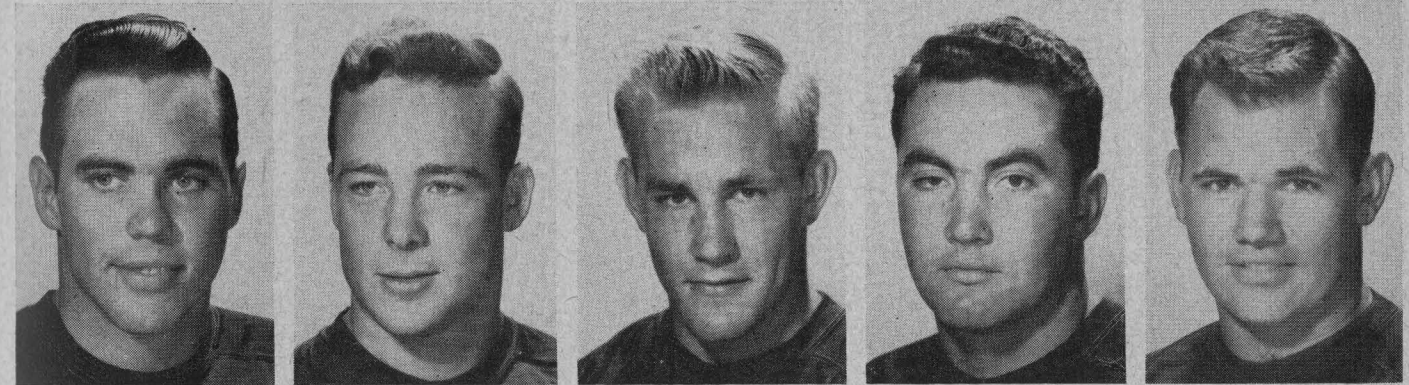
— CONGRATULATIONS —

W. S. Bellows Construction Corp.



Eighteen years experience as an integrated geophysical research organization . . . your assurance of accurate interpretation of data obtained thru advanced instrumentation in the hands of capable personnel. Seismic Explorations, Incorporated, 1007 South Shepherd, Houston, Texas.

The Rice Athletic Association Would Appreciate You Patronizing Our Advertisers



50—Jack Day

56—Weldon Wersterfer

54—Donald Rhoden

55—Lee Stonestreet

60—Simon Verrett

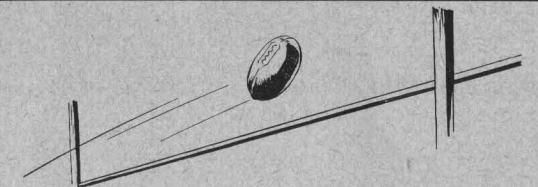
JACK DAY, Center—Junior, 210, 6'. Will team with Stonestreet and soph Rhoden to handle most of Owl center chores, with the three dividing time at the two linebacker posts. . . has the ability, needs game experience.

WELDON WERSTERFER, Center—Soph, 196, 6'. A high school "phenom" at New Braunfels, needs to improve to meet high Southwest Conference standards, but should do so. . . big and rough.

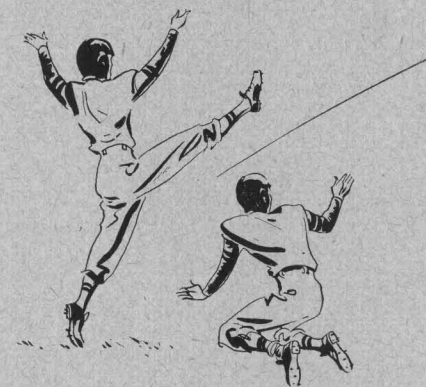
DONNIE RHODEN, Center—Soph, 185, 5'10". Has a fine chance to become a real Owl standout. . . should play a lot as sophomore. . . impressed greatly with linebacking for frosh. . . relatively small for rugged position, but should grow some more.

LEE STONESTREET, Center—Senior, 205, 6'. Bushy-browed battler from Dallas has unenviable task of replacing the great Joe Watson. . . has the right temperament for it. . . aggressive, leader type. . . good enough to get in required playing time to letter, through three senior lettermen also on squad in '49. . . will play both offense and defense, should see much action.

SIMON VERRETT, Guard—Junior, 205, 5'9". Short, stocky, solid. . . another holdout as a '49 soph. . . needs to develop speed. . . comes from rabid high school football town of Port Arthur.



KEEP THE SCORE IN YOUR FAVOR

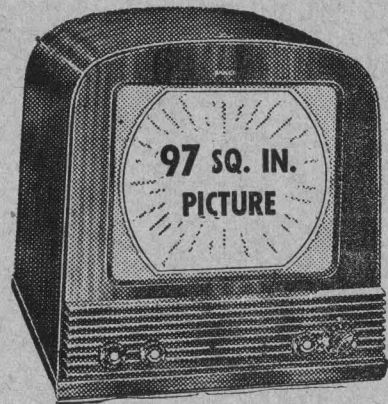


The future financial security of yourself and family need not be dependent on the "breaks" you may get in life.

A well planned Great Southern Life insurance program is the best guarantee you can have that your plans for financial security will be carried out exactly as arranged.

Ask your Great Southerner to cooperate with you in planning the life insurance program you need.

GREAT SOUTHERN
Life
INSURANCE COMPANY
HOME OFFICE HOUSTON 1, TEXAS



... you're on the 50 yard line
at any event

with a **PHILCO TELEVISION**

1951 MODELS START AT
169.95
PLUS FED. TAX AND WARRANTY

EDMONSON'S, Inc.

2606 South Shepherd

JA 3383

LI 1780

FINEST factory trained service
LOWEST possible DOWN PAYMENT
EASIEST possible MONTHLY PAYMENTS

... Open Evenings ...

THOMPSON'S

THOMPSON-FOSTER CO., LTD.

2419 Rice Boulevard

KE 7066

JA 8660

meet the Champ ...
NATURAL GAS

Where there's a choice of fuels, Natural Gas wins hands down! Nothing approaches its speed, dependability or flexibility—and yet it is still the most economical of all modern fuels. Homemakers, businessmen, industrialists agree—for cooking or refrigeration, heating or cooling, Natural Gas is the champion fuel, the fuel of champions!



ERNEST COKER'S

Ye Old College Inn

FAMOUS FOR THIRTY YEARS FOR THE FINEST
STEAKS AND BIG BAKED POTATOES

CLOSED TUESDAYS

6545 SOUTH MAIN STREET — LY 6484

EARLE NORTH BUICK CO.

In the Famous Buick Block

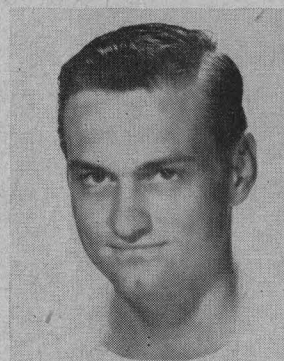
2215 MILAM

Buick Sales and Service

TEAM MANAGERS



LARRY
SHRIVER



RICHARD
LEEDER

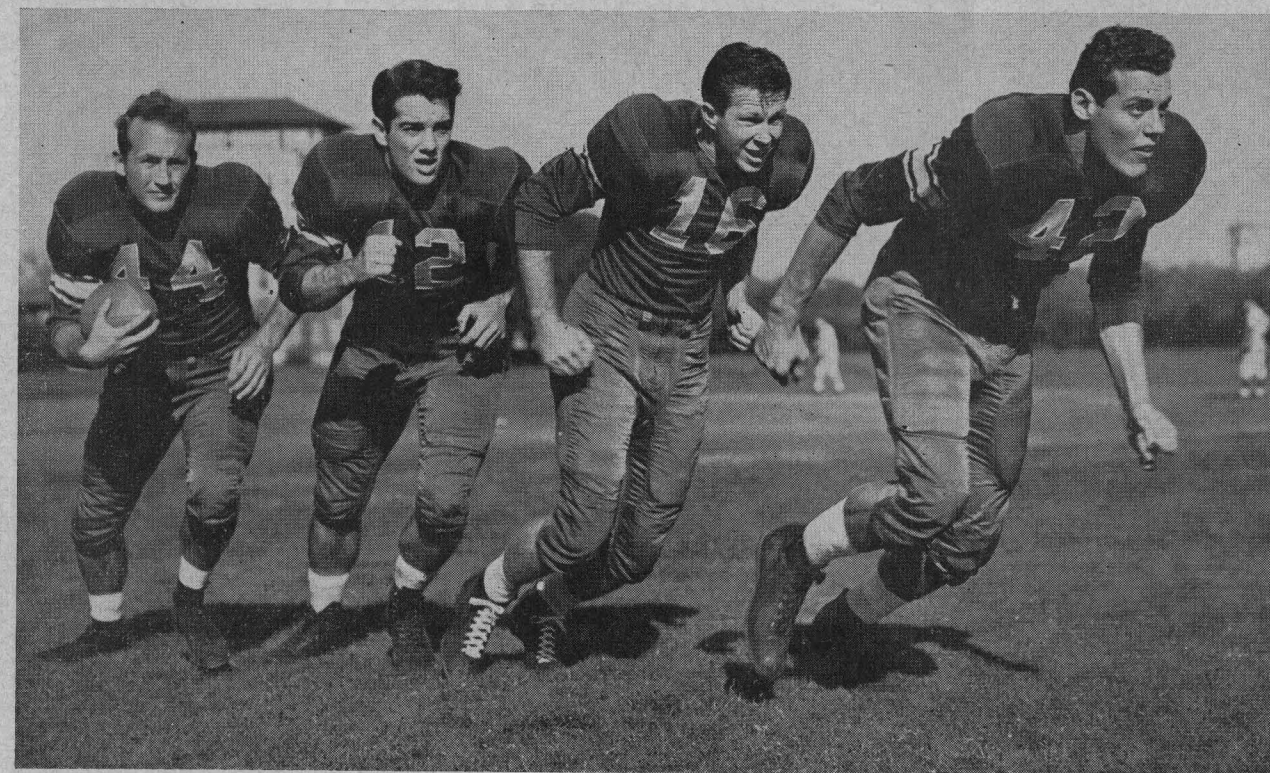
Quality
is always a **Champion**

COOPER & MATTHEWS

LUMBER CO.

H O U S T O N

RICE OWLS' BACKFIELD

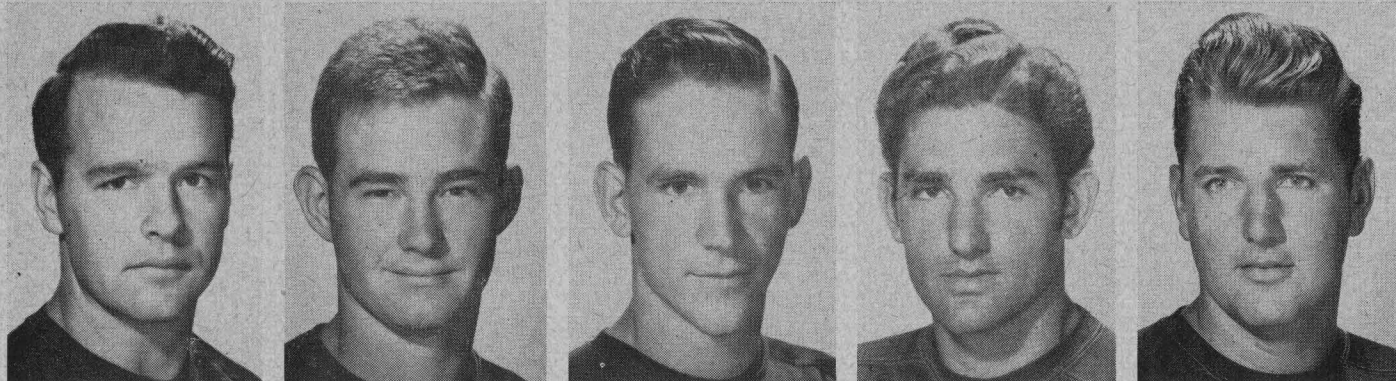


SONNY WYATT

BILLY BURKHALTER

VERNON GLASS

GEORGE GLAUSER



87—Hardy Dean 82—George Wright 88—Billy Fisk 81—George Pontikes 86—Billy Wright

HARDY DEAN, End—Junior, 180, 6'1". In addition to role as kick-off specialist, also should see some action as an end... played briefly last fall... hails from nearby Conroe.

GEORGE WRIGHT, End—Soph, 182, 5'10". A "shorty" for an end, but competent all-round performer... no kin to Houston sportswriter of same name... this George Wright is from Palestine, Texas.

BILLY FISK, End—Soph, 165, 6'. With a little more weight, this Irving youngster will become a standout... loves to play football.

GEORGE PONTIKES, End—Soph, 181, 6'. With a bit more drive and determination could be a standout... was all-state end with Lamar of Houston in '48... played all sports in high school, likely will stick to football in college... carries high school nickname still, "the Greek."

BILLY WRIGHT, End—Junior, 223, 6'1". An ex-Milby High star, this Houston lad needs just a bit less weight, a bit more speed to live up to pre-college promise... also plays baseball... lifeguard in summer.

1950 CHANGES IN FOOTBALL RULES

All persons on the sidelines must remain five feet in back of the sideline or end zone line. This applies to coaches, substitute players, trainers, policemen, and photographers. A new limit line, marked by a broken stripe, has been placed all the way around the playing field to mark this special boundary for those on the sidelines. This rule has been designed to prevent player injuries by collisions with non-participants on the sidelines, and to improve the view of spectators.

In event of a penalty against the defensive team on a try for extra point, as before the offensive will get another try if the first conversion attempt failed. However, this season if the conversion is made and the defense has fouled, yardage for the penalty will be applied against the defensive team on the play on the following kick-off. Example: Team A makes the extra point. Team B was offside on the play. Team B, having been scored on, chooses to receive the kickoff. Team A kicks off from the 45 yard line instead of the 40 yard line as before.

An effort has been made to curb the dangerous use of elbows, hands, and forearms. On offense, when a teammate of the runner uses a hand or forearm in blocking or to supplement a shoulder or chest block, the hand must be in contact with his body, and the hand or arm must be kept below the shoulders of the opponent throughout the block. However, if the player being legally blocked deliberately causes

the blocker to contact him above the shoulders, there is no penalty.

On defense, when a hand or arm is used by an opponent of a runner, then the hand must be in advance of the elbow in making contact.

Roughing of the holder of the ball for place kicks will be subject to a penalty same as roughing the kicker on punts.

If a player catches a punt or intercepts a pass and falls into his own end zone because of momentum involuntarily, or if he should be tackled before able to change direction on entering the end zone in such a manner, the ball will be dead at the point at which it was caught. The player will **not** be charged with a safety or touchback.

Each team now is allowed five time outs in a half instead of four as last season. This increase is designed to give teams more opportunities to get specialists, such as punters or passers, into the game for special plays. A timeout is charged each team for a substitution while the clock is in progress except when the ball changes hands, at which time both teams may substitute as many men as they desire.

Penalties governing certain maneuvers that are used very little in modern football have been taken out of the rule book. Such as, the fair catch rule is out for receivers of kicks, although the player must be given a chance to make his catch without interference. Rules governing the flying block and flying tackle have been eliminated.

RICE YELL LEADERS



TED MONTZ WILLIE MORENO GORDON BAKER EARL BELLAMY
Head Yell Leader

SONGS

RICE'S HONOR

All for Rice's honor, we will fight on.
We will be fighting when this day is done;
And, when the dawn comes breaking,
We'll be fighting on, Rice,
For the Gray and Blue. We will be loyal
To Rice be true.

GRAY BONNET

Put on your old gray bonnet, with the blue
ribbon on it,
And we'll hitch Old Sammy to the fray,
And we'll rock, rock, rock 'em,
And we'll sock, sock, sock 'em,
To the end of Judgment Day.

FIGHT SONG

Fight for Rice; Rice, fight on; Loyal sons, arise!
The Blue and Gray, of Rice today
Comes breaking through the skies.
Stand and cheer! Victory's near!
Sammy leads the way.
Onward go, to crush the foe.
We'll fight for the Blue and Gray.
Rice... Fight... never dies.
Blue... Gray... in the skies.
Stand... Cheer... Rah, Rah, Rah.
Go... Go... Yeaaaaa Rice!

YELLS

WHISPER YELL

(Whisper)
With an R
With an R
With an ICE
With an O
With an O
With a WLS
Rice Owls Fight!
Louder: Repeat same Very Loud:
Repeat same.

FIGHT 'EM, OWLS

Fight 'em Owls
Fight 'em Owls
Fight 'em, fight 'em,
fight 'em, Owls
Fight 'em Owls
Fight 'em Owls
Fight 'em, fight 'em,
fight 'em, Owls
Rice Owls Fight!

DELAYED YELL

Count (to self)
1, 2, 3, 4, 5, 6, 7, 8—R
1, 2, 3, 4, 5, 6, 7, 8—I
1, 2, 3, 4, 5, 6, 7, 8—C
1, 2, 3, 4, 5, 6, 7, 8—E
Rice Owls Fight!

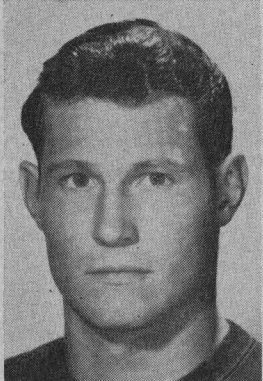
LOCOMOTIVE

Sssssssssssssssss, Boom!
R-I-C-E, rah rah (slow)
R-I-C-E, rah rah (faster)
R-I-C-E, rah rah (real fast)
Rice, Owls, Fight!

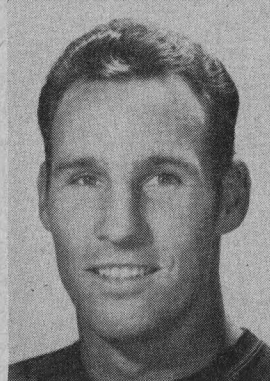
YEA BLUE, YEA GRAY

Yea B-L-U-E-
Yea G-R-A-Y-
Yea R-I-C-E-
Hey, Hey, Hey!

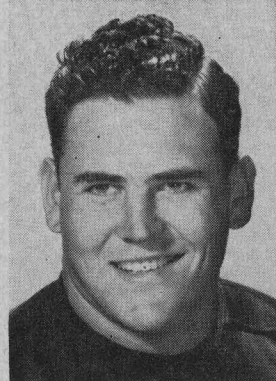
"The Official Watch for Timing this Game is Longines... The World's Most Honored Watch"



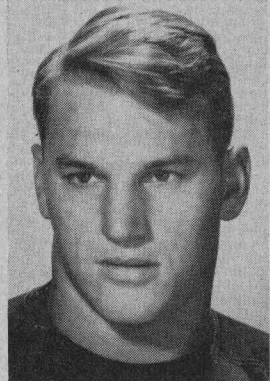
76—Bobby Moore



74—Paul Giroski



77—Bob Winship



71—Bill Crockett



73—Glenn Walls

BOBBY MOORE, Guard—Soph, 200, 6'1". Impressive as a freshman, again in the spring...can play guard or tackle...potentially a top notch player...comes from real football country, Amarillo.

PAUL GIROSKI, Tackle—Senior, 250, 6'5". The giant of the team in stature...could be the "big man" of the line in ability... may try the "iron man" role of playing offense and defense at tough post...has improved amazingly in two years...never played in high school in Houston...did play some at Allen Academy at Bryan...strong candidate all-conference honors... one of few married men on squad.

BOB WINSHIP, Tackle—Senior, 235, 6'2". One of the biggest men in conference, slated to team with another 250-pounder, Giroski, to form first line defensive tackles...a Reagan High ex of Houston...one of most experienced of linemen...slated for heavy duty, principally on defense.

BILL CROCKETT, Tackle—Soph, 203, 6'2". Promising big fellow from Bonham...may develop into outstanding player...hard tackler.

GLENN WALLS, Tackle—Junior, 220, 6'2". Developed so fast last fall, he was not even listed in pre-season brochure...he makes this one with capital letters...offensive specialist...good blocker...one of three Dallas boys on Rice squad.

*We are proud to have shared
in the building of the fine new
Stadium and Field House.*

SHELTON W. GREER

JAMES H. GREER

DISTRIBUTORS OF

ADLAKE ALUMINUM WINDOWS

used in the Press Booth

INSULROCK structural, insulating SLABS
for sound-proofing Press and Radio Booths
Roof Deck on Field House

**"BIG TIME" FOOTBALL
TO HOUSTON**

The splendid new football stadium at Rice Institute means top notch teams of the nation will be coming to Houston in the future years.

Already the Owls have announced the scheduling of several major intersectional games to be played here, in addition to the annual battles with the familiar conference foes. More "big name" football teams will be coming this way—watch for the announcements!

So far, it has been revealed that Rice will play the U. S. Naval Academy team and the Pittsburgh Panthers here in 1951. The L.S.U. Tigers are slated to return to this stadium in 1952, and that same season the Owls will be host to the University of Wisconsin Badgers of the Western Conference.

The Rice Athletic Association Would Appreciate You Patronizing Our Advertisers

**SAVE
THAT
CAR!**



**CONTINENTAL
TRAILWAYS**



**NO PARKING PROBLEMS
NO TRAFFIC WORRIES
NO DRIVING FATIGUE**



NEW YORK KANSAS CITY SAN FRANCISCO GENEVA, SWITZERLAND MINNEAPOLIS TULSA
BOSTON MILWAUKEE DALLAS DENVER
CHICAGO LOS ANGELES LONDON, ENGLAND NEWARK OMAHA OKLAHOMA CITY
AND OTHER CITIES FROM COAST TO COAST

HARRIS, UPHAM & Co.

Main Office: 14 Wall Street, New York

Established 1895

BROKERS

Stocks, Bonds and Commodities

Members

New York Stock Exchange New York Curb Exchange
New York Cotton Exchange Chicago Board of Trade
Chicago Stock Exchange New Orleans Cotton Exchange
and Other Leading Exchanges

HOUSTON OFFICE: 4th FLOOR, GULF BLDG.

Phone FAirfax 8191

L. D. 873-4

CHARLES I. McLEAN, Resident Partner

Private Wire System to Principal Markets and
Direct Private Wire to Our New York Office

For a sample of the finest in
Flooring, see the Rice Institute
Gymnasium. Furnished by the
Flooring Man of Houston

R. B. CLOUSE LUMBER CO.

Ask Your Builder for the Best

"CLOUSE'S FLOORING"

4717 GULF FREEWAY
HOUSTON, TEXAS

WA 4193
WA 4194

QUINBY EMPLOYMENT SERVICE

"A NAME WORTH REMEMBERING"

You can benefit from our many years experience in the personnel field

Executive, Office, Sales, and Technical Personnel

Member National Employment Board, Chamber of Commerce and Employment Counselors

409 Bankers Mortgage Bldg.

Houston 2, Texas



Compliments of

TEXAS STATE TILE TERRAZZO, INC.

3115 Golfcrest Blvd. MI-0285

☆ *The Southwest's*

Finest . . .

and reasonable, too!

WELDON Cafeteria

4916 South Main

- Open Daily—11:00 a.m. through 8:30 p.m.
- Two Free Parking Lots Adjoining

South End Building Materials Co.

READY MIX CONCRETE

SAND — GRAVEL — CEMENT

South Houston Plant
5102 Galveston Road
Phone MI-3328

Kirby Drive Plant
4830 Kirby Drive
Phone LY-9131

Frederick Poultry and Egg Co.

Distributors of

Fairmont Fresh Dressed Fryers

Fairmont Sweet Cream Butter

Peter Rabbit Bran

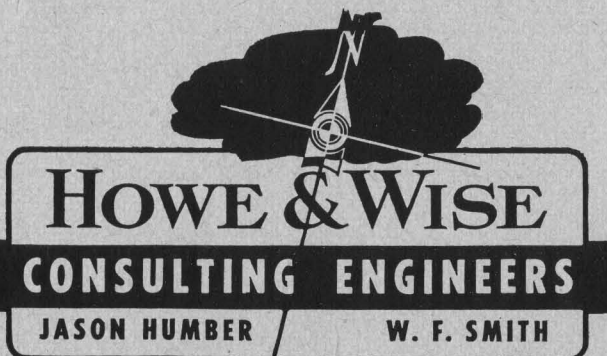
Large White Eggs

1817 CENTER

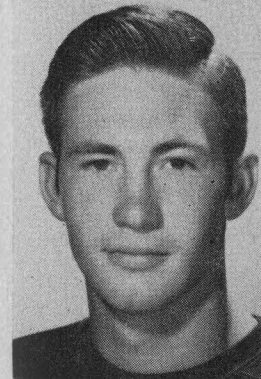
HOUSTON, TEXAS

Jason Humber
Class of '22

W. F. Smith
Class of '26



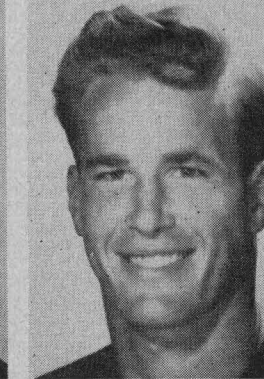
The Rice Athletic Association Would Appreciate You Patronizing Our Advertisers



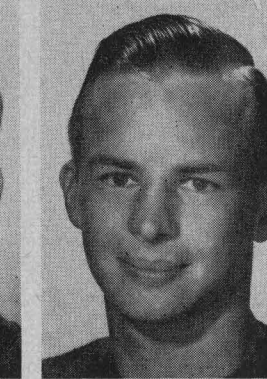
11—Bobby Allen



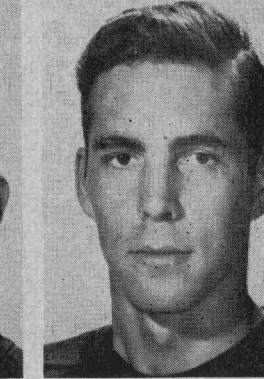
81—Bill Howton



80—Sonny McCurry



89—Frank Allen



85—A. L. Boughton

BOBBY ALLEN, End—Soph, 170, 6'2". This Sonora boy has fine spirit, and is developing into a top prospect.

BILL HOWTON, End—Junior, 177, 6'2". Highly regarded as sophomore, one of few first-year men to letter on that senior-dominated squad. . . fine pass catcher. Like Allen, a bit light but able. . . will divide offensive and defensive chores with Allen. . . a fine hurdler in track.

SONNY McCURRY, End—Junior, 187, 6'4". Another of a big crop of tall ends. . . only letterman at this position. . . like Howton, rated very high as sophomore end. . . the Wharton bay played greatest game against North Carolina in Cotton Bowl. . . gave

Froggie Williams and Tarheels' Art Weiner a run for the spotlight. . . a potentially great pass receiver. . . can play offense and defense. . . also plays basketball.

FRANK ALLEN, End—Senior, 182, 6'. Dependable and experienced although playing time was limited since Owls were heavy with senior ends last fall. . . one of oldest men on squad. . . capable playing both offense and defense. . . relatively light for a SWC lineman, but good hustler and battler.

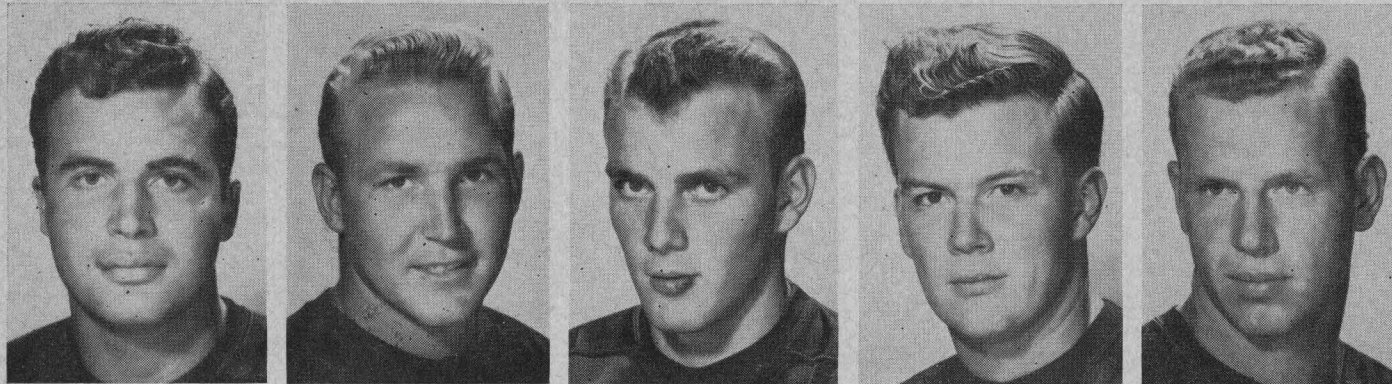
A. L. BOUGHTON, End—Senior, 200, 6'5". Tall enough to get up there for passes. . . squadman for two years, wants to make most of windup as senior. . . ran first string in spring.

The "Fresh Up" Family Drink!



*You like it...
it likes you*

BUY A CASE TODAY!



49—Doyle Weldon 24—Jerome Bindseil 63—George Sartor 72—Lynn Preston 66—Hans Wagner

DOYLE WELDON, Back—Senior, 200, 6'. Called "The Whale" by his teammates, this husky veteran from Cleburne is biggest of the backs. Listed as a fullback, Weldon is more apt to see game action as a linebacker on defense.

JEROME BINDSEIL, Back—Soph, 182, 6'. A fullback who was a star in high school with the New Braunfels Unicorns... has power but must develop more speed, which is a goal in his grid efforts this fall.

GEORGE SARTOR, Guard—Soph, 181, 5'11". Local boy who

hopes to make good... has a chance to play some ball if he continues to hustle and improve.

LYNN PRESTON, Tackle—Junior, 225, 6'1". This big fellow from West Texas (Abilene) is taking a tough engineering course, misses many workouts because of heavy lab schedule... could help a lot if he can get to drills some... also a '49 holdout for competition.

HANS WAGNER, Guard—Soph, 192, 6'. Rugged youth of German descent from Schulenberg... likes it rough... should get required polish while breaking in as a sophomore.

Ding-How

*Houston's Most Distinctive
Chinese Restaurant*

ONE BLOCK NORTH OF THE SHAMROCK

CANTONESE COOKERY UNSURPASSED

K. C. STEAKS SEAFOODS

6800 SOUTH MAIN ST.

JA 8490

The Style

SPOT

of Houston

TOWN and COUNTRY

3603 Main St. KE-8785

DICED CREAM IS A SPECIAL CATERER'S

FLAVOR FRESH ICE CREAM



Manufacturers
of the original
"ESKIMO PIE"

HOUSTON DICED CREAM CO.

BE CAREFUL

When you leave the football game and begin the trip home, drive carefully and be considerate of the many other drivers who are trying to reach home also. The Texas Safety Association warns us that the fall months of the year are also the highest highway traffic accident months, therefore, extra caution is needed to insure your safe arrival at home after the game.

CONSOLIDATED CHEMICAL INDUSTRIES INC.

Heavy Chemicals for Industry

640 MELLIE ESPERSON BLDG.
HOUSTON 2, TEXAS

Drink . . .

CANADA DRY

Beverage



CANADA DRY BOTTLING CO.
HOUSTON, TEXAS

Drinks in Stadium are
cooled with Texas Ice "Sized Ice"

TEXAS ICE & FUEL COMPANY



6301 Harrisburg • WAYSIDE 2154



See the MT. VERNON by DU MONT
at the television dealers with the coveted
Du Mont Franchise

DU MONT

FIRST WITH THE FINEST IN TELEVISION

Distributed by **J. A. WALSH & CO.** Houston



DICK GALLAGHER, Head Coach; ED ULINSKI, Line; EDDIE FORREST, Frsh; MIKE SCARRY, Back

Emmett's Seafood Company

Here is a gift everyone enjoys. It's truly a treat for those
living miles from the Gulf.

Iced in special containers and rushed by air or railway
express to destination anywhere in the U. S. A.

Producers and Shippers
of Fresh Seafoods

AT 4526 Houston, Texas

Foote's Cafeteria

*Houston's Finest Suburban
Dining Room*

2 Blocks West of Stadium

2407 RICE BOULEVARD

Compliments of

J. M. ODOM CO.

CONTRACTORS

Austin, Texas

Compliments of

Wagers Packing Company

713 N. San Jacinto St.

Houston 2, Texas

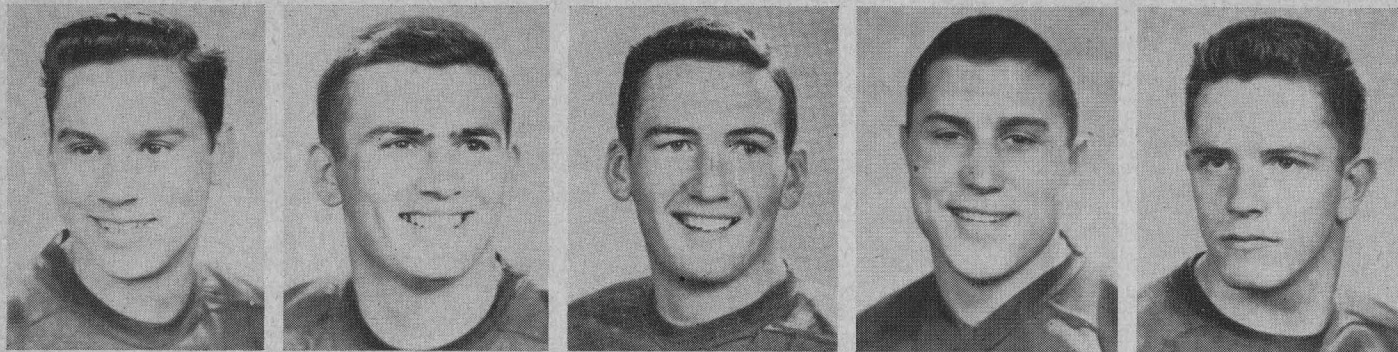
CA-9076 CA-9077

BRONCO COACHING STAFF



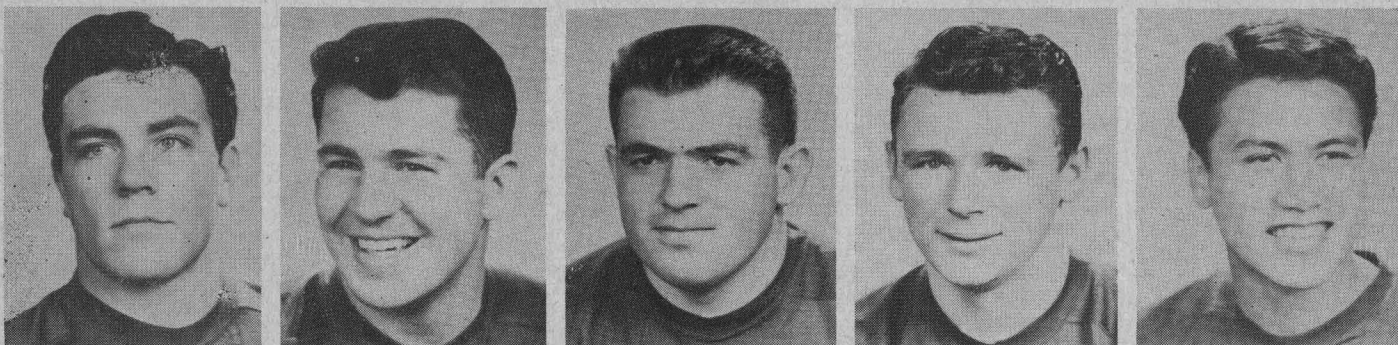
This is a special season for the veteran
Santa Clara trainer, "Smitty" Schmidt,
pictured at the right. The popular Bronco
trainer is celebrating his twenty-fifth year
of service with this California school.

The Rice Athletic Association Would Appreciate You Patronizing Our Advertisers



10—Fran Hare 63—Ben Brown 42—John McMahon 76—Edo Biasatti 51—Larry Azevedo

BRONCO PLAYERS



70—Basil Cunningham 79—Bob Dominick 64—Don Bordenave 62—Pat Malley 43—Abraham Dung

RICE FRESHMAN FOOTBALL

Here is the Rice freshman schedule:

- October 7 (N) McNeese Jr. College
AT LAKE CHARLES, LOUISIANA
- October 20 (N) S.M.U. frosh
AT HOUSTON
- October 27 (N) U. of Texas frosh
AT HOUSTON
- November 9 (N) Texas A&M frosh
AT COLLEGE STATION
- November 17 Stephen F. Austin frosh
AT HOUSTON

(All freshman home games are played at the old Rice Stadium)

Future stars of Rice games to be played in this stadium are the young men who are members of the freshman team.

The 1950 Rice "Owlets" are playing five games this season, two of them are home games against the freshman teams of rival Southwest Conference schools—S.M.U. and Texas—on the night before the varsity contests.

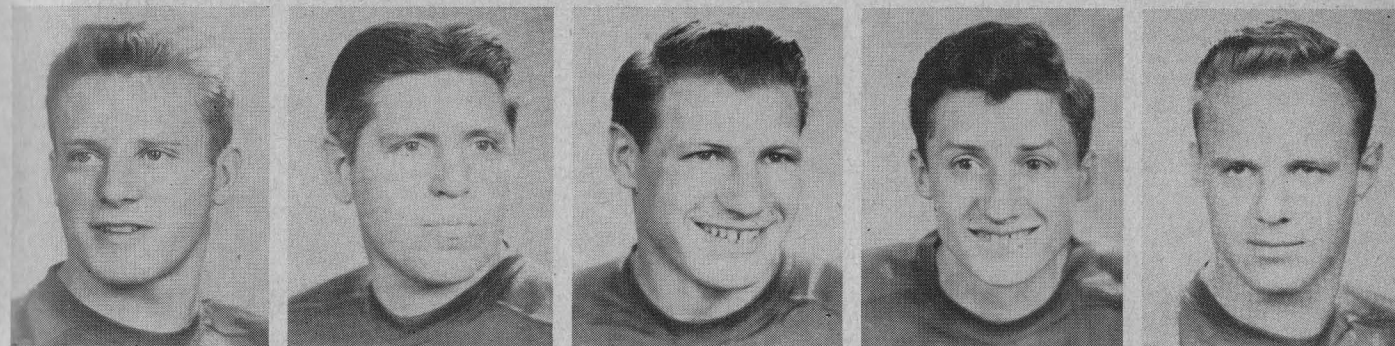
Rice freshman coach Charley Moore and his aides, Harold Stockbridge and Jack McBride have a talented group of about fifty top schoolboy stars of last year to work with on their freshman roster.



COLORFUL COWGIRL HOSTESSES
WELCOME YOU ABOARD YOUR
TRANS-TEXAS STARLINER . . .

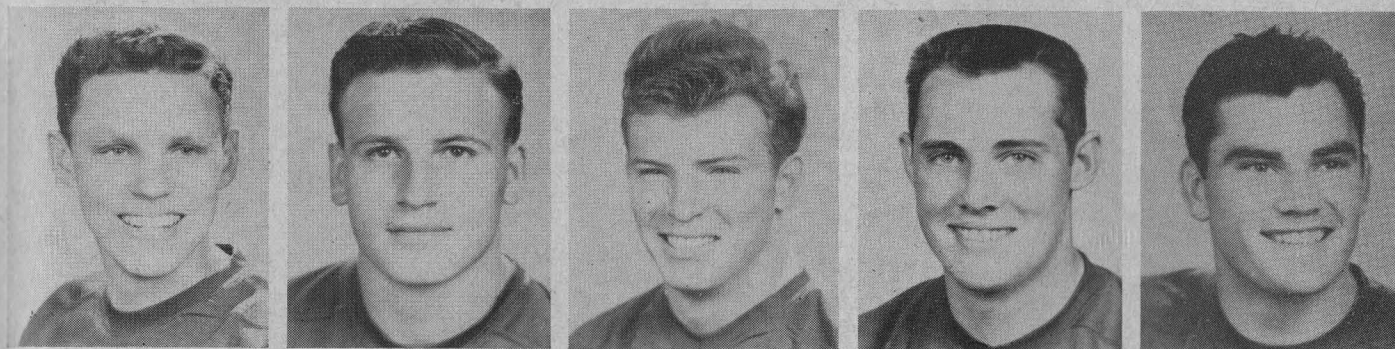
**FLY TRANS-TEXAS
STARLINERS
TO THE
SOUTHWEST CONFERENCE GAMES**

TRANS-TEXAS AIRWAYS

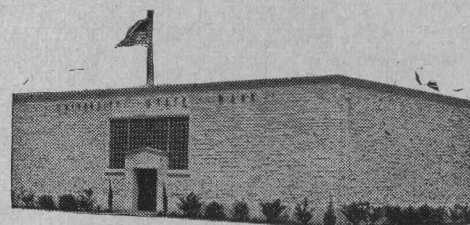


40—Jack Kaplan 71—Jim Cozad 77—Eugene Pisenti 11—Marte Formico 44—Bernard Vogel

BRONCO PLAYERS



12—Del Rasmussen 65—John Justice 15—Ben Moran 88—Eugene Lynch 31—Hank Burget



COMPLETE
METROPOLITAN
SERVICE

WITH
RESIDENTIAL
CONVENIENCE



Serving Southwest Houston

West University Place, Southside Place and Bellaire

AUTOMOBILE TELLER SERVICE

UNIVERSITY STATE BANK

KEystone 5574

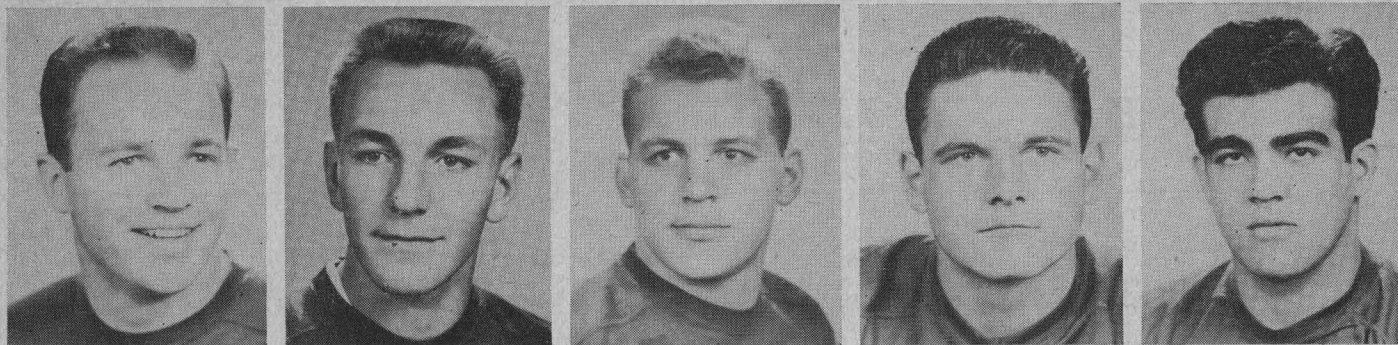
6135 KIRBY DRIVE at AMHERST

FIRST STATE BANK

BELLAIRE, TEXAS
MOhawk 3413

5123 BELLAIRE BOULEVARD

MEMBER FEDERAL DEPOSIT INSURANCE CORPORATION



86—Richard Wiborn

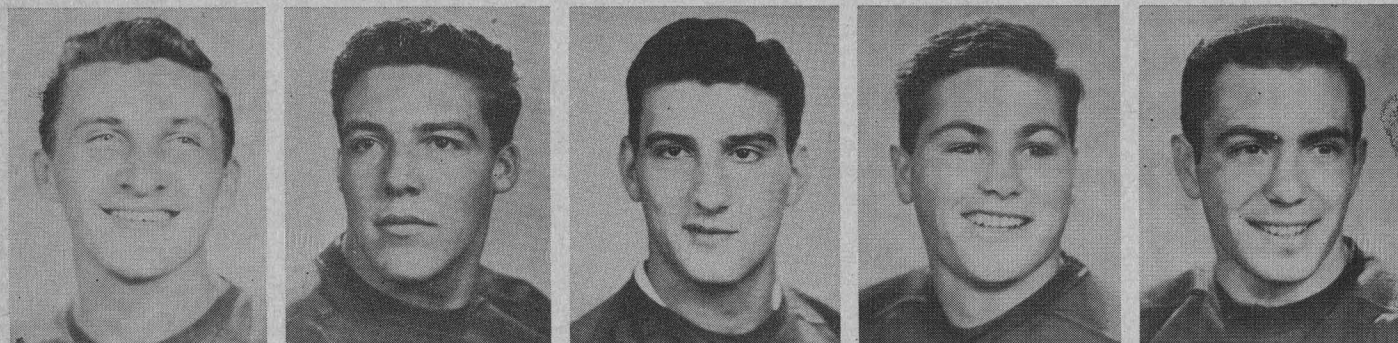
82—Gern Nagler

35—Saxon Wraith

61—Louis Lang

55—Marvin Ferreira

BRONCO PLAYERS



21—John Pasco

32—Joe McCargar

67—Joe Ramona

84—Marvin Gregory

28—Len Napolitano

★

Jiffy Quick

LIFT!

DRINK
Dr. Pepper
GOOD FOR LIFE!
REG. U.S. PAT. OFF.

at

Olson

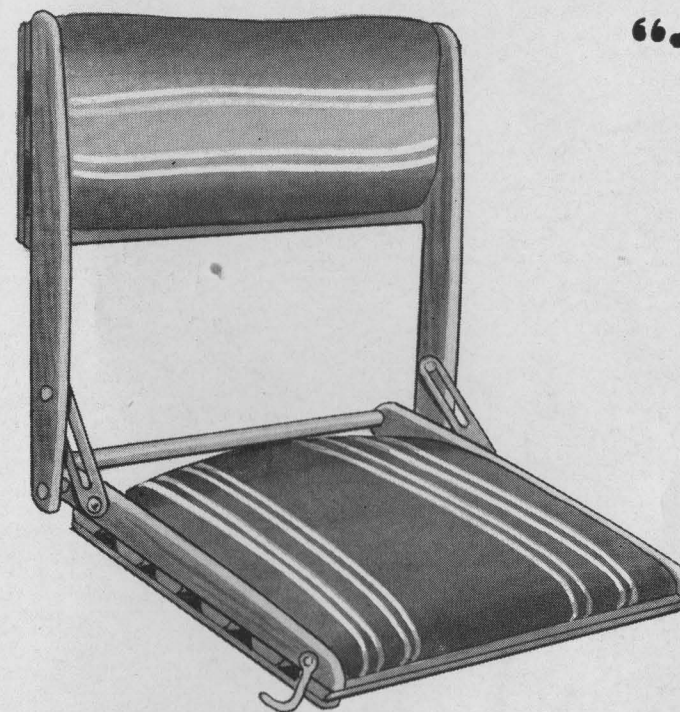
DRINK A BITE TO EAT!

★

The Rice Athletic Association Would Appreciate You Patronizing Our Advertisers

Holt's Sporting Goods — Where Houston Shops for FUN!

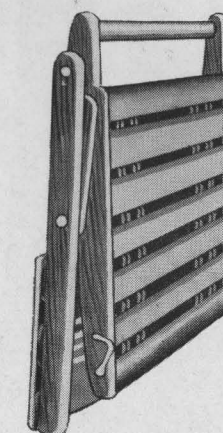
Comfort at Every Sporting Event!



**"Take-Along"
BACKREST**

Note the
Handle for
Easy Carrying!

\$4.95
Each



The **first** really comfortable BACK REST . . . for boats, stadiums . . . and a dozen other uses! Made of selected OAK, with soft cushions of smudge-proof painted water-repellent drill. Cadmium plated metal parts with hooks for fastening to boat seat. "Take-Along" BACK REST was designed to bring comfort at a price everyone can afford! Buy yours NOW for this season's big games!

ORDER BY MAIL—get yours in time for week-end football games, for your fishing or boating trip!



HOLT'S SPORTING GOODS
Fannin at Lamar, Houston 2, Texas

Please send me () "Take-Along"
BACK REST at \$4.95 each.

NAME _____

ADDRESS _____

CITY _____ STATE _____

CASH CHARGE C.O.D.

"My Choice for Taste and Mildness"

